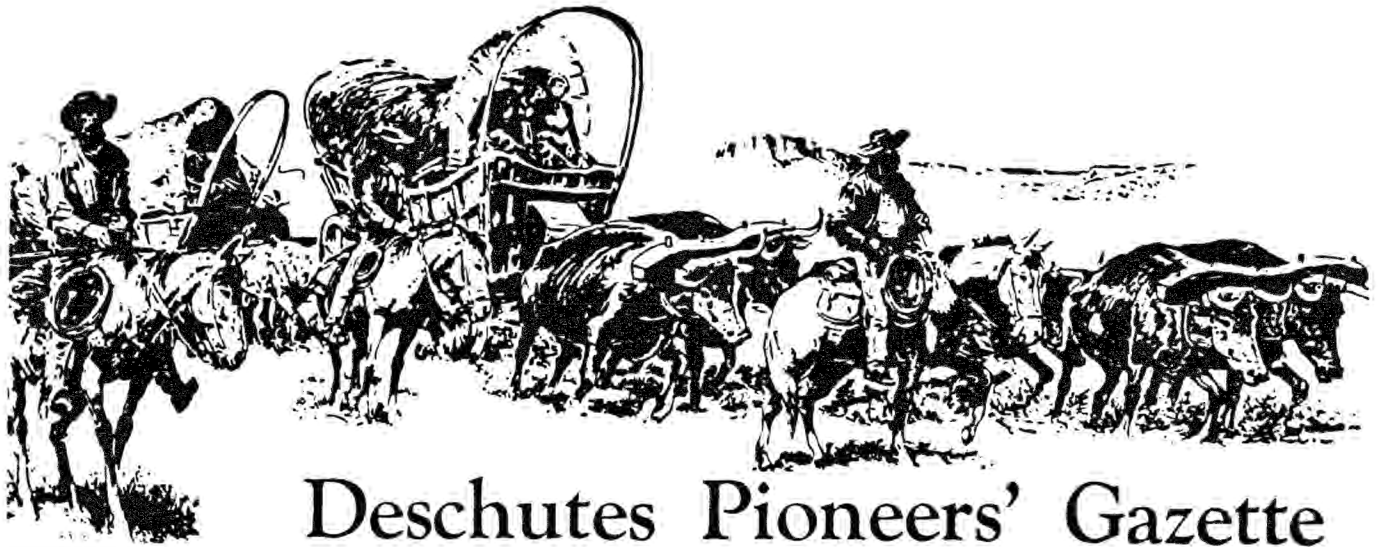


SE 2998282



Deschutes Pioneers' Gazette

VOL. 1

JANUARY 1986

NO. 43



Company "I", 162nd Infantry, Oregon State Guard, at Camp Murray, Washington, taken August 6, 1940.

— Photo provided by Mrs. Jackie Aschenbrenner

U.S.
Cre
Desc
B2
1

41 Hobson Street
Mesa, AZ 85204

Mesa Genealogical Library
464 East 1st Ave.
Mesa, Arizona 85204

BC 1329264

Central Oregon's National Guard Unit Company I — Mustered in May, 1936

The 1930s saw a world racked by economic disaster, disease, starvation, political oppression, indeed a world not much different than the world before or since. There were vacuums and imbalances, and into these areas pushed aggressive forces. The Japanese were in Manchuria before 1932, declared control there in that year. In Germany, in Italy, there were few urban unemployed by 1936, for the war machines were being rebuilt and factories hummed. France, Great Britain, Scandinavia looked to their own armies, navies, and arsenals.

The United States looked with concern beyond its own precarious economy to these warning signals, to the civil war in Spain in 1936, and later to the Anschluss in Austria in 1938, to the threat of invasion of Czechoslovakia by Germany in the same year. And as always, it looked to civilian potential for defense, for its regular army was a tiny remnant of that raised in World War I.

To Central Oregon's isolation then came a whisper that said, "Prepare! Prepare!", a whisper translated in local terms to establishment of a local National Guard unit. Such a unit's military functions would pump badly needed monies into the local economy in Deschutes County — estimated revenue to Bend might be as much as \$63,000 annually. An armory might even be built with state and federal support, providing more local money and employment.

Therefore Company I, a National Guard unit reminiscent of the citizen militia which has been part of American history since colonial times, was mustered into service May 25, 1936, the first state unit organized outside of Portland in nine years. It was first a "howitzer unit" 60 men strong, attached to the 162nd Infantry, 41st Division.

John L. "Jack" Chute was elected captain in traditional fashion and young lawyer Robert Foley was appointed second lieutenant.

These were the members, mostly local high school boys, of the original unit:

John P. Andrews, Charles S. Blucher, Edward J. Bourassa, Harvey B. Brinson, Donald L. Carver, Charles E. Currie, Louis A. DeLapp, Glenn E. Dickerson, Jack A. Dudley, Robert T. Duffy, Kenneth W. Dukes, Jack T. Dunn, Orville E. Egan, Neil Farnham, Lyle E. Fletcher, Lawrence W. Foxford, Herbert S. Francis,

Jack A. Gertson, Patrick V. Gibson, Elmer C. Graham, Clarence J. Gregg, Max J. Griffiths, Bert W. Hagen, Charles R. Hagen, Edward O. Hall, Kenneth E. Harquail, Robert W. Hendershott, Palmar T. Holk, Jack L. Hollenback, Bruce G. Houck, J. Robert Keyes, Frank C. Kissler, Wilbur E. Larson, Virgil C. Lyon.

Francis H. Mason, Jr., Russell W. McGuire, Robert W. McLeod, Francis G. Meagher, Michael D. Mirich, Earl M. Mulkey, Robert D. Munson, George T. Murphy, Freeman C. Murray, Chester C. Myers, Lawrence C. Nielson, Norman A. Nysteen, Gerald E. Olson, Harry Olund, Pete D. Pavick, Philip M. Pederson, William S. Rae, Ralph K. Schouboe, Robert P. Smith, Charles L. Spangler, William A. Stookey, Jack E. Vandever, John L. Wetle, John A. Williams, John M. Wise, Ernest G. Zeek.

Between that May 1936 date and September 1940 the unit's membership fluctuated, increased to four officers and 129 men, changed from artillery to infantry. Regular drills were held in the Bend Athletic Club Gymnasium (then serving Bend High School as well) and outside when weather permitted. Beyond this until called to active duty, training was rudimentary, with weapons and equipment of the previous conflict in 1918.

That picture changed when the unit reported to Camp Murray, a National Guard training camp, part of the Fort Lewis complex in Washington. By October the unit was 119 men. While some Company I boys came home on Christmas leaves that year, in shifts, the infantry training went on. In late June and July, 1940, they were part of a large maneuver force at Hunter Liggett, California; the *Bend Bulletin* for July 17 that year remarked, "There's not much doubt in the minds of Company I boys and commander, Captain John L. Chute, that they'll have at least another year of army life." It was a prophetic feeling.

A letter from Private William Stookey, correspondent to the *Bulletin*, dated October 8, 1940, detailed some of the experience at Camp Murray:

"Probably the most comment from other units in camp about I Co. is regarding the large mess fund contributed by the people of Central Oregon. No other company in camp can claim such backing from their home town as I Co. received from Bend, and all Central Oregon. The food is plentiful and well prepared. Our cooks are among the best in camp. Men in other companies would like to be attached to I Co. for meals.

"Our schedule since arrival in camp has been devoted to preparing comfortable quarters for the winter and gradually bringing the men into condition to withstand the rigorous routine of intensive training. A 5 mile hike was taken last week, an 8 mile one this week. These hikes will be made until the men are able to stand 25 miles a day without any effort."

Chet Myers, who later took a commission and rose to rank of major, made the following corroborative statement in a letter to the editors (*Gazette*) dated November 18, 1985:

"In my opinion the outstanding feature of Company I's service in WWII was the extremely low casualty rate among those young men who left Bend in September 1940 enroute to Fort Lewis, Washington.

"Infantrymen, especially Combat Infantrymen, in all wars experience the highest casualty rates. Co. I's pre-war training, strong

MOBILIZATION

DANCE

For Benefit National Guard Company I Mess Fund

TONIGHT SCHOOL GYMNASIUM

Music By
BUD RUSSELL'S DANCE BAND

Money Derived From This Dance Will Be Used by the Boys As a Mess Fund to Provide Foods Not Supplied by the Army

DANCE WITH THE NATIONAL GUARD—HELP THE BOYS!

Sponsor Courtesy Bronke-Samson Lumber Company Inc. and The Shevlin-Hixon Company

community support, and the resulting high morale, most certainly contributed to their outstanding combat record with minimum casualties."

Next year's *Gazette* will complete the review of circumstances for Company I.

Here is the roster for Company I, 162 Infantry, in October, 1940:

First Sergeant—Myers, Chester C.
Sergeants — Graham, Elmer C., King, William E., Mulkey, Earl M., Perry, Lester L., Wetle, John L.

Corporals — Caldwell, Charles I., Dewhurst, Tom, Glazier, Eugene R., Langeberg, Stanley B., Larson, Tom M., McDonald, Robert B., Mosen, Arthur W., Pederson, Phillip M., Riebe, Bert W., Scarlett, O.D.

Privates First Class — Berrigan, William R., Betts, Daniel A., Blackett, Ray R., Cochran, Delbert H., Dexter, Ralph E., Gibson, Dale E., Gibson, Darrell R., Gibson, Patrick V., Leverett, Vernon J., Perry, Jack W., Potts, Hyle L., Reidel, Paul S., Rippee, Oliver S.

Privates — Barnett, Delbert R., Bassett, Kenneth E., Bean, Hugh A., Benson, Martin E., Betts, Horace L., Boles, Robert C., Brinson, Jack G., Brown, Forrest E., Brown, William A., Carrier, Edwin E., Castle, George F., Chambers, Bob W., Chapman, Carl W., Chitwood, Marvin R., Clark, Archie B., Clark, Robert C., Collins, James, Compton, William A., Cook, John P., Cooley, George F., Cundell, Ernest G., DeWitt, Leonard C., Eagen, Larry O., Eason, Laurence D., Ferguson, Floyd A., Forden, Donald B., Francis, Herbert S., Garmann, Clayton L., Gassner, Lawrence W., Gibson, Elmo J., Graham, Ralph G., Gregg, Clarence J., Hagen, Charles R., Hastings, Warren E., Herr, Joseph E., Holk, Palmer T., Hudson, Robert O., Hunstein, Stanley E., Jackson, Don W., Jackson, Steve M., Kanoff, John A., Kelley, Maurice H., Kentner, Miles A., Kissler, Frank C., Kohfield, Bob A., Kribs, Benjamin L., Ludwig, George W., Majors, Terry A., Marr, Robert A., Masterson, Henry R., Matson, Buck D., Matson, Ralph B., Mayer, Robert, McCunn, John F., McLeod, Robert W., McMillan, Joseph H., McNerney, Harry G., Millard, Glen W., Miller, Arthur J., Mitchell, James P., Moen, Emil K., Monical, Gordon M., Morgon, Deverl O., Murray, Freeman C., Nieters, Albert A., Nieters, Herman J., Nieters,

cont. on pg. 7

ENLIST NOW!



Company I, Central Oregon's national guard unit, will enter federal service on September 16th. At that time the strength of the unit will be increased from 78 to 129 men. By enlisting before September 16, you are protected by national guard status and will return home after a year's service. Enlistments after September 16th will be in the regular army for three years.

ADVANTAGES OF ENLISTING NOW:

- 1—Leave With You: Local "Buddies"
- 2—Make Ready for Promotion and Increase in Pay
- 3—Come and Return to Home Life (See—Home) When You Are Going to the Draft Where You Are Through
- 4—Serve in a Central Oregon Unit

The Staff Sergeant of The Bend Bulletin

Pringle Falls, Another "Lost" Community

"The Most Beautiful Townsite in Central Oregon," said the advertisements in the 1916 **Bend Bulletin**. These carried a map of the town which showed 15 blocks with streets Park Avenue, Blew Avenue, Mountain View, Butte Avenue and Riverside, all running north-south. East-west streets were Hill, Pine, Main, Market, Maple and Clay.

In 1916 there was a hotel, the Mill View, which also housed the office of A. D. Lee, Sales Manager. The post office, one of few in Central Oregon allowed to use a two-word name, was established October 17, 1916 (discontinued June 29, 1918) and there was talk of a lumber mill, of general merchandise business, of "wonderful attractions for tourists and home-builders."

The enterprise was typical of the rush to develop every manageable resource in the Deschutes country after the rails came to Bend. The promoters of Pringle Falls planned a rail terminus and a hydro-electric project which would afford power to the community and to nearby La Pine. O. M. Pringle took 640 acres there, later built a two-story house with lumber hauled from The Dalles.

The **La Pine Inter-Mountain** carried a number of news items from Pringle Falls through 1917-18, demonstrating the activities:

August 30, 1917

"J.J. Blew returned Tuesday from Portland where he had been for a ten days visit. When he left here, it was his intention to be away for several months, but did not get the kind of work he figured on, so decided to return to the homestead."

"Clarence Bullock is serving as special Fire Warden for this locality, during this smoky weather."

"The Forestry Department here have installed a telephone at the cook house for the benefit of the service."

"Arthur Emmerich returned to Portland the first of the week after a several days visit at the home of his uncle John Devereaux."

"Edw. Whitney of Portland, and Wm. Eaton of Culver, were at Pringle Falls for a day or two the first of the week, examining the clay deposits there."

Sept. 20, 1917

"Miss Lucile Beal and Miss Sullivan spent Saturday at F. L. Howard's."

"Mr. and Mrs. M. C. Donahue are at Bend at the home of their son, J. M. Donahue, for a short stay."

"Work on the new school house is progressing rapidly. The building will be ready for occupancy in a few days."

"John Devereaux is erecting a temporary dwelling house on his lot on Blew Avenue and will soon move his family here."

"Postmaster Riddell has been informed that the office at Pringle Falls will not be discontinued at the present, and it is hoped that the office will make sufficient showing in the future that the point will not be raised again by the department. The efficiency of an office depends a great deal on a regular mail service and thus far this has not been secured. The postmaster would be glad to have any body sufficiently interested in this community to be willing to carry the mail to notify him. The government allows a compensation for such regular service."

"The school board held a meeting Tuesday evening, and awarded contracts for driving the school wagons for the year. H. D. Hill was given the contract for the down river route, and Frank Johnson for the up river route. Furniture was ordered for the new school at Pringle Falls and it is planned to have the school start there in the near future."

May 16, 1918

"Mrs. Malin made a business trip to La Pine on Saturday."

"Mr. Devereaux finished work on his homestead last week and returned to the Falls."

"Mr. Swayzee and Mr. Devereaux have been cleaning up the townsite this week. The rain enabled them to do some burning in safety."

"County Supt. J. A. Thompson was in town yesterday and went to Pringle Falls to arrange for eighth grade examination."

"J. L. Benson is moving from Pringle Falls, where his family has been living since last fall, to the homestead on Little River."

Pringle Falls
The Most Beautiful Townsite in Central Oregon

BIG MILL MAN WANTED
Mill site on finest location river. 20 miles of navigable logging stream, central to over Three Billion feet yellow Pine.

HOTEL MAN WANTED
Finest spot in Pringle Falls set aside for Hotel. View of mountains and river, with wonderful attractions for tourists and home-builders.

GENERAL MERCHANDISE MAN WANTED
Big future.

See **A. D. Lee, Sales Manager**
Mill View Hotel

-Ed Jackson Photo, Bend Bulletin, 1916.

Like a considerable number of Central Oregon townsites with schools and post offices, the expected influx of home seekers and investors did not materialize. Part of the reason was World War I. Part of the reason was the elevation and related climates.

The editors ask the assistance of **Gazette** readers in determining whether photographs of the Pringle Falls development can be obtained for copying. They would be prized additions to the Deschutes County Historical Society photograph collection.

Ingenuity Was Key

The operation to mine the considerable diatomaceous earth deposits west of Lower Bridge began in 1916, when Portland capitalists brought equipment and labor to the site. Over the years the company formed then was sold and resold and bore a number of names reflecting the material — diatoms — deposited in geologic times in great concentration. Multiple uses were found for the fossilized microscopic skeletons, including filtration and abrasive cleansers.

Known variously as Western Diatomite, Oremite, Dicalite and Atomite, the operation expanded with the markets for its products.

One remarkable piece of engineering recorded was the movement of a Bucyrus steam shovel, weighing 20 tons, by rail from Terrebonne siding to the mine. This took place in August, 1920. Special track was laid from Terrebonne — ties, rails, ballast — to the Deschutes River and across to carry a locomotive, tender, and the flat car carrying the shovel. The entire operation went off without a hitch; the train backed to Terrebonne, crews picked up the rails and ties behind it.

(In a similar situation, an early mill logged some of the country east of the Bull Springs drainage. The narrow gauge rails came from Bend, carrying the mill equipment. Track was laid ahead of the train which sat on the last set of rails while crews moved the other sections ahead. When the purchased timber was cut out, the Pine Tree Mill came out the same way.)



-Deschutes County Historical Society
Early LaPine business district: Pringle Falls closest supplies.

Deschutes Pioneers' Association Membership — 1985

1888, Isa Corum Freeman, Queen 1962.

1890, Dr. R.D. Ketchum, President 1954, R.H. McCallester.

1896, Gertrude E. Johnson.

1898, Mahlon A. Couch, Joe C. Turner, Peggy Silvers Turner.

1899, Clyde Grater, Neva Weigand McCaffery, Dorothy Miller McCauley, Past Secretary, Teresa Monroe Sampels.

1900, Anna Long Linebaugh, Martha Long, Queen 1978, Neva M. Warner.

1901, Russell Emery, Estella Bogue Jeffries, Katie Stephens.

1902, Anna McDonald Cloer, Queen 1982, Mary Silvers Couch, Cora Bates Creighton, Clyde Keever, Veva Schroeder Long, Claudia Triplett Martin, Past Secretary.

1903, Helen Filey Krogfos, Edith Masten Hollinshead, Past Treasurer, Betsy MacInnes, John N. MacInnes, Julius Mendenhall, Thomas A. Poulsen, Cora Sather, John Sather.

1904, Ruth Barnes, Queen 1974, John Franks, Eldora Eakman Glascock, Lois Triplett Holliday, Freda Clark McDaniel, Velma Edwards Moffitt, Roy E. Neff, Harold Sather.

1905, Carol Boyd, President 1972, Past Treasurer, Remembrance Committee, Edna Boyd Brinson, President 1950, Frances M. Brisbois, Herbert P. Eby, Pauline Windom King, James McNeely, Cecil C. Moore, President 1965, Charlcia Mendenhall Moore, Florence Bell Read, Queen 1961, Ida Niswonger Reynolds, Queen 1984, Jessie E. Sichan.

1906, Rhonda Hoover Dake, Helen Tweet Evans, Past Secretary, Blanche Wilson McFadden, Wilma Mendenhall Ramsey, Charlotte Hopper Russell, Fred Sampels, Martha Sherman, W.J. Bryan Triplett.

1907, Wilma Ray Beaver, Violet Howard Cox, Lena Bradley Gowdy, William J. Hall, Helen Helfrich, Anne Boyd Ibison, Claude H. Kelley, President 1960 & 1961, Hugh H. Kelley, Orville E. Shults, Edna Ogle Skjersaa, Stella Claypoof Whetzel, Susie Kelley Wolf.

1908, Alvin Cyrus, Tomi Nichols Daron, Howell Roberts, Thelma Zumwalt Roberts, Eloise Rasmussen Ronfeld, Ted Sather, Claudia Constable Scruggs.

1909, Harlow E. Allen, Boise Aune, Nellie Bemby, Sam Boyce, Claude Coffelt, Kathleen Corliss, LeRoy S. Fox, President 1951, Sophia Becker Gibson, Queen 1980, Margaret Coffelt Hackleman, Miriam Triplett Hoover, Olga Alt Norcott, Marjorie Smith, Rose Hunnell Steidl, Past Treasurer, Frances E. Thompson, Past Remembrance, LaDessa Chapman Walter.

1910, Hope Arstell, Fred E. Atkinson, Marion Smith Edgett, Mable Dahle Franks, Clarence Theodore Gould, Vernon Gould, Nellie Graffenberger, Volney Grant, Ralph Grimes, Raymond Gumpert, Alma Yeager Hansen, Bonnie D. Hollinshead, Marie Miller Levitt, Dudley Long, Lorena Long Entriken, Loren John Masten, Leona McKay, John Miller, Dorothy Moore Nelson, Herbert Nelson, Frances Saunders Parker, Evelyn Lynes Reeve, Veerland A. Ridgley, Frances Roberts, Rodney Rosebrook, President 1976, Cal R. Smith, Richard M. Smith, Elmer Spencer, Rose Miller Stanchfield, Dorothy Teater, Izelle Ridgley Thompson, Alfred H. Triplett, President 1980, Alice Holmes Wilkinson, Elsie Horn Williams, Queen 1975.

1911, Kenneth C. Bennett, Buelah Brockway, Evelyn Crow Caldwell, Leta Mason Culler, Virginia H. Elliott, Beatrice Stephenson Felzer, Robert H. Foley, President 1982,

Wilford Fordham, Lee E. Freeman, Josephine G. Godon, James A. Harris, Irma Keeney Henderson, Virgil Henkle, President 1984, Friday Holmes, President 1978, Edith Gove Junor, Margaret Ireland Keyes, Donald Larsen, Douglas Larsen, Jim Lemke, Gordon McKay, Georgianna Benson Martin, Sara Perry Multhauf, George Norcott, May Godon O'Keefe, Beth Stauffer Smith, Steve W. Sprague, William H. Staats, Mable Foster Sullivan, Maurice Ward.

1912, Clara Van Matre Anderson, Maud Eaton Anderson, Melvin Barcus, Winfield J. Creighton, Willard Cyrus, Marie I. Daly, Elnora Dodson, Queen 1979, Maryann Crawford Fulton, LaVerne Gove Hanshaw, Irene Tweet Houck, George W. Huettl, Lois Harrington King, Mildred Hoover Kuhl, Wayne Lithgow, Leora Connarn McNeely, Bernice L. Masten, Minnie Hoover Miller, Jewel E. Smith Prosser, J. Clark Rhodes, Edna Fox Roats, Maurice F. Roberts, Leola Rose, Hazel E. Sampels, Homer Slack, Jeannette Keyes Stollmack, Kathryn Orr Terry, Phyllis Thompson, Marjorie Hoover Tromblee, Queen 1983, Milford Wallenberg, Gertrude Whipple, Edith Holt White, William Harold Wilson.

1913, Donna Beesley, Laurene Boardman, Venita Dorothea Dehne Branch, Harry P. Brandon, Darwin H. Clark, Johnnie Crawford, James F. Finley, Dorothy Hinman Franks, Violet Mayne Franks, Queen 1976, M.L. Freeman, Howard Helgeson, Spencer Ketchum, Dale McMeen, President 1985, Wayne E. Mason, Lloyd Mayne, Cora Wood Neill, Martin Nielsen, Marion Dubuis Prichard, Helen Wood Robins, Ruth Garske Rosengard, Carral Schmidt, Emma Miller Taylor, Douglas J. Ward, Laura Lakin Wonsler, Secretary, Emma Wright.

1914, Alice Atkinson, Alice Bishop, Vern Blanchard, Malcolm Buick, Vance Coyner, Irene Buchwalter Day, Gladys Boylan Gardner, Bruce Gilbert, Lois Maker Gumpert, Ray Harrington, Letha Holt Jacobson, Hazel McLouth Longham, Goldie Mayne, Ted Meagher, R.A. Miller, Lena Freeman Myers, Alzea Heinze Nichols, Sylvia K. Petersen, Georgia Price, Olive Williams, Gertrude Miller Zufelt.

1915, Edith E. Caughey, Ben L. Cook, Myra Symons Edwards, Robert H. Fox Jr., Fred Fulton, Lawrence Gales, Marion Schnur Innes, Vivian Friedley Prophet, Viola Harrington Ketchum, Zaida Honeycutt, Robert Seward Johnson, Eleanor Lippincott, Gerald McCann, Nita Howell McGuire, Lucille Brown Meeks, Roberta Buick Miles, Helen Mogan, Mary Munier, Dan C. Renno, Carol Brobert Snider, Doris Coombs Thomas, Eunice DeBoer Thompson, Charlotte Taylor Tucker, Elsie Urquidez, Frances E. Walton, Hazel Stingley Ward, Idella Ware, Doretta Nichols Watrous.

1916, Esther Bales, Roy Benson, Daloris Matzger Bullat, Vern Carlson, Inez Short Collins, Laura B. Douglas, Claire J. Douglas, Roy Gilson, Madge Smith Glassow, Ben Grafenberger, President 1977, Elizabeth Marsden Gulick, Kenneth C. Gulick, Harold E. Gutendorf, Clara Soderstrom Haglund, Joan Helfrich Hale, Dorothy Edwards Hatch, Betty Riedel Huettl, Letha Harrington Huettl, Norval Hufstader, Mildred Kelley, Jessie Stookey King, Leo Mickel, Elnora Moyes, Bertil Nelson, Edith Soderstrom Pease, Mable Anderson Rasmussen, Hilduer Scott, Mable Soderstrom Wachter, Charles Laurence Varco, Jane Ferrell Wells, Mildred West, Rae Beaver Wilson, Xvie Ketchum Wise.

1917, Wade Byers, Wanda Dorothy Heinze Byrum, Blanche Cannon, Katherine Ferrell Dukes, Jeanne Dubuis, Eileen Duffy, Thelma Nysteen Eastman, Grace Linton Jr., Dorothy M. Erickson, Alfred Forden, George Fulton, Lola Haden, Marian Herbert, Evelyn Parsons Howard, Helen McLaughlin Jensen, Dolly Henderson Johnson, Clara Kerns, Edith Kostol, Robert E. Lyons, Lucie Peters McGlumphy, Hazel Kulstad Munkers, Vernita Parker, Clyde Sholes, Grace Cleveland Skjersaa, Harry Skjersaa, Mary Ruehr Warner.

1918, Eugene Allen, Gladys Carol Anders, Milton E. Anderson, Marie Barnum, Eunice Dugan Benson, Pauline Biladeau, Bonita Riedel Brandon, Helen Harriet Varco Brown, Nina Crouch, Mae Godard Cyrus, Deon Brown Drost, George Drost, John Elliott, Colleen Spangler Gales, Marjorie Grimes, Helen Donavon Hemmingsen, Wilda Lane Henkle, Ross Houck, Ariene Hultengren, Rose Kraft, Maryelva Meeks Lithgow, Melvin "Bud" McClain, Regina DeBoer McClain, L.V. McMahon, June E. Masten, Forrest E. Putnam, Bill Raper, Naomi Reed, Ermel Scott Ross, Mary Grace Davidson Scott, Melvin J. Scott, Norman H. Skjersaa, Helyn Long Van Huffel, Treasurer, Erta Scott Vaughan.

1919, Frances Allen, Lee Allen, Margaret Kribs Bagley, Vivian Rasmussen Benson, Harold W. Bradbury, Selma "Sally" Erickson Cain, Millie Rastovich Chopp, Thedora Clanfield, Bertha Conklin, Joe Elder, Evelyn Zumwalt Elliott, Farley J. Elliott, Gordon Erickson, Helen Wette Faddis, Irene Wells Foley, Marie Drost Fountain, Jack Gertson, June Helgeson, Rose Logan Holk, Carl Holt, Avon Kittleson, G. Elaine Rasmussen Langworthy, Eva Marie Susac Lennox, James I. McClain, Fernette Parkey McDowell, Lowell McMeen, Tom Merchant, William E. Miller, Orville C. Miltenberger, Oliver Pickens, Victor Povey, Minnie Povey, Phyllis Raft, Willard Rasmussen, Ray Redding, Stella Pearl Runge, Alice Gove Schmidt, Sarah Hohnstein Shumway, Vern Singleton, Irene Stookey, John Susac, Mollie Taylor, Evelyn Wanichek Yeoman.

1920, Maurice Angland, Rosemary Cashman Arbow, Gottlieb Baer, Eleanor Bechen, Eileen Best, Jack Grant Brinson, Helen McCormick Brown, Vadabelle Dodson Brumblay, Alta G. Cullison, Charles J. Dugan, Marguerite Elder, Gladys Emery, Roberta Linton Erickson, Henry Ferguson, Ernie Gasbar, Evelyn Gasbar, Isabelle Gould, Virginia Gray, Helmer Gustafson, President 1981, Della Vinal Hamby, R. Wayne Hamby, Dorothy Mehl Hostetter, June Olsen Jackson, Gordon C. James, Harley Jeffries, Ernest Kallberg, Florence Kelley, Daniel Kilgore, L. Catherine Larsen, Berdett McClain, Paul A. McCormick, Paul D. Montgomery, Emil Nordeen, Abe Rickman, Neola Reinhart Ross, Bernice M. Wagner, Joseph Werner.

1921, Marion C. Armstrong, Florence Bauer, Calvin G. Boyd, Marcus Corwin, Roberta Elliott Coxen, Craig C. Coyner Jr., Mary Libbe Foster Duncan, Jack Ferguson, Marian Glaab, Hazel Bernice Nelson Hoilenbeck, Don Jackson, Marie H. Kruger, Ray LeBlanc, Tom M. Larsen, Fred Lieberman, Harold L. Maker Jr., Don Miltenberger, Rita Chute O'Grady, Freda Potter, Vivian Fissel Raycraft, Elsie M. Roe, Fern Gilbert Romberg, Thelma Sattersdahl, Warren Sholes, Sidney Taylor, Wilma Hollinshead Wisbeck.

1922, Grace E. Abbott, L.G. Bertram, Leo Bishop, Mollie J. Bogue, Delorus Bowen, Mahlon I. Couch, Harlon Coxen, Dorothy Cundell Crocker, Gladys Davis, Lethe Foster, Glis Garvik, L.W. Gassner, Bud Holliday, A. art A. Hunter, Lowell A. Jensen, President 1957, Zulima Munkers Johnson, Douglas B. Long, Dr. Vern R. Manny, Eileen Meagher, Josephine Moore, Melvin Munkers, President 1974, 1975, Harley Owens, June I. Petersen, Einer Selfors, Edna C. Shepard, June Helgren Slate, William D. Smith, Julius Steen, Gladys Olson Steinlicht, Irl Wagner, Dora Weirauch Widdows, Wendell Wolgamott.

1923, Signe Selfors Baillargon, Lois Cady, Les Chapman, Leon E. Devereaux, Erma Ellis, Edna Fossen, Vi Grindle Freeman, Darrell Gibson, Faye Gilbert, Donald Graham, LeNeve Graham, Donald T. Grubb, Vivian Jones Hanson, Corwin E. Hein, Phyllis Herrling, Gladys Kulstad Howard, Barbara Weeks Hufstader, Frances W. James, Ivan Jensen, Arthur F. Johnson, Jack Kittredge, P.F. Knight, Barbara Fuller Kremers, Howard Krog, John N. Kulstad, Robert Kulstad, Pearl Lechner, Byron F. Logan, Nora B. Loree, Georgia Sharp Lyons, Esther McGimsey, Omar L. Moffitt, Maurine Conklin Ratliff, Melba Smith Sauron, Peggy Magill Sawyer, Betty Daly Seems, Merle Singleton, Rozella Smith, Dorothy Isham Sullivan, John K. Susac, Irwin Taylor, Marguerite Joyce Tharp, Wendell Thompson, Claude C. Vandeventer, Jr., Floyd Zink.

1924, Evelyn Hanson Allen, James D. Arbow, Buelah Bockman, Lucille Byers, Ella May Douglas, Treva Fairbanks, Alph C. Hanson, Vera Livingston Haupt, Lily Hollinshead, Queen 1981, Marie Crozier Hunt, Robert Johnson, Florence Kamisky, John Lane, Catherine Carlin Mattson, Walt Nelson, Roberta Waldron Nicholson, Irene Peters, Velma Spickmier Povey, Charles Raycraft, George Raycraft, Gladys Reinhart, Ramona Bockman Sellers, Mildred Sholes, Ruth Slack, Ruth A. Stover, Ruth Rickman Thalhofer, Mary Byland Thompson, Hilda Weber.

1925, Everett Apling, June Bach, Alex R. Brockway, Keith Clark, Doris Claypool, Isabelle Crocker, Paul Crocker, Sofie Larsen Curtis, Neil Davis, Lois Dearth, Ruth Dempsey, Nellie Fountain Drost, Louis Dunlap, Minnie Adams Dunlap, Marshall D. Fix, Hazel Hyde Gammond, Eva Dodson Gassner, Norma Hollinshead Harkness, Herb Henderson, Maxine Iverson, Vi Irvine, Rena Kelley Janes, Doris Fitch Kittredge, Dee Klassen, Eleanor Workman Long, Lucille McMeen, Bill Myers, Bernice Nelson, Gladys E. Nordby, Robert Nordby, Thelma Perry O'Day, Reuel O'Leary, Walter F. Petersen, Jeanice Pursel Raper, Ella Rasmussen, Norma Lyons Raycraft, Nell Constable Reese, Loyal Rhodes, Gus Roats, Margaret Shores, Bea Spencer, Helen Putnam Steen, Olive May Adams Waterman.

1926, Ona Blakley, Mary B. Bradetich, Evelyn Brookings, Alma Jean Burleigh, Mabel McCole Buxton, Stella Ward Chiopeck, Irene Rude Clark, Donna Werner Clark, Elizabeth Edmison, Florence E. Guddat, Patricia Moore Howard, Paula Loree Lewis, Maxine Lipps, Frank H. Loggan, Oscar Mellin, Frances O'hary, Helen Peak, Dan Rastovich, Ruth C in Rosengarten, Irene Ryman, Agnes Semors, Wilma E. Taylor, Martha Vandeventer, Ruth Duquette Wilson.

1927, Grant E. Barney, Mary Putnam Davis, Mary Emery, Lucille Euston, Lloyd Evans, Oertel Fix, Rosa O. Foster, Patricia Muir Gibson, Marjorie Iler Gilbert, Ed Glaab, Jennie

Gribskov, Joyce Armstrong Gribskov, Bertie J. Hawes, Robert V. Hawes, Ethel Lang, Lillian Loggan, Beatrice Olson, Eva Plummer, Robert Potter, Burton Emerson Varcoe, Marjorie Foster Wilson, Jack Wise.

1928, Sallie Bird Vandeventer Dunkle, Joan Harris Evans, Bernice L. Hoogner, Patricia Moffitt Jensen, Dr. Robert L. Jensen, Mrs. Erwin McNeal, Ruth Martin, Ivis Nelson, Mable Rosebrook, Past Remembrance, Lena Sampels, Payton A. Shaw, Doris Steele, Shirley Tuck Susac, Jean Webster, Ruth Wood.

1929, Francis Jordan Anderson, Roland N. Anderson, Faye Grissom Apling, Jackie Chute Calkins Aschenbrenner, Gunnar Bjorvik, DeLoris Selken Bjorvik, Henry Blackwell, May Anderson Blair, Olive Riemurs Fordham, Alva Hammer, Maurice Iverson, Marian Simmons LeBlanc, Alma Reno Lermo, Lawrence McGuire, Grace V. McNellis, Maurine Lyons Maudlin, Barbara Reta Philippe, Catharine E. Poulsen, Joann Obermolte Rickman, Evelyn Anderson Russell, Helen Anderson Sholes, Ruth Simonis, Hugh Simpson, President 1983, Barbara Fryrear Spillman, Lois L. Stacy, Erwin Varcoe, Lena Zeek, Mardelle Zink.

1930, Ethel Dugan, Robert Fowler, Violet M. Hammer, J. Reed Howard, John Jensen, Joe Jensen, Earl Lang, Marilyn J. Walter Russell, Louise Simpson, Edith Saunders Sutherland, Joseph Wayne Werner, Laura Taylor Wise.

1931, Patricia Kelley Mangin, Albert W. Nelson, Evangeline Nelson, Mel O'Day.

1932, Katherine Bennett, Amelia R. Crews Bromley, Beverly Grubb Cook, Bertha Gregory, Ruth Barker Grubb, John C. Haney, Evelyn Harrigan, Vera Wagner Larsen, Don C. Layton, Marcia Skjersaa Rose, Ray G. Spencer.

1933, Homer Brown, Clara Skjersaa Gilliland, James Gilliland, A.B. King, Alice Mickel, Marjorie "Marj" Rademacher, Genevieve Nicholson Shideler, Marvella K. Smith, Bernice Wallenburg.

1934, Virgie Carlon, Catharine Holmes, Kilton Kamisky, Fredora Hall Lingerfelt, Catherine Logan, Dave Rasmussen, Jessie "Jay" Ross, Thorel Seems, William L. Stollmack, Joanne Van Sickle, Helenmarr Hammer Wimp.

1935, Bertha C. Anderson, Evelyn Asseln, Richard Asseln, Betty Marie Hunt Baker, Wayne Faddis, Gladys Foster Halligan, L.R. "Hap" Halligan, John R. Layton, Corydon Sanford "Larry" Lermo, Betty Ives Moffitt, Helen O'Keefe Rastovich, Arnie Reinhart, Jerry William Rice, Violet Klabas Shepard, Joseph Thalhofer, James Van Huffel, Jerene Ranger Werner.

1936, Alford Ball, Arthur Dahlgren, Gladys Dahlgren, Marie Dunlap, Chrissie Blakley Ensworth, Loretta Fread, Delena Knouft, Walter Knouft, Keith Langworthy, Mary Ringer Larsen, Dorothy Carver Meilin, Melvin Rosebrook, Alice May Walker, Cora R. Wallan.

1937, Otto H. Bauer, Ilene Brinson, Idamae Hunter, Marilyn Brown Johnston, A.B. Lingerfelt, Virginia Matson, Paul Reynolds, Norman Sather, Helen Weil.

1938, Richard Dean Bogue Burton, Donna Freeman, John L. Hatch, IraDell Carter Kilgore, Allen Martin, Jodie Goodwin Nordby, Thomas Harry O'Grady, Tony Rosengarth, Evelyn Carlson Sather, Virginia L. Shults, Lola Taylor.

1939, Ken Cale, Wally Kremers, Edla Marcoulier, Felix Marcoulier, Clarence W. Reeve, Sharon Matson Rosengarth, Walter Shores, Wendall Thompson, Marvin A.

Russell.

1940, Clarence Bells, Dale Ellis, Donald Ellis, Terry Foley, Jeannie Haney, Phyllis Fraser McClain, Bill Ross, Kathleen O'Grady Tiller.

1941, Gladys Blackwell, Ivalee Graffenberger, Ken Johnston, Marcella Mickel.

1942, Solveig Jensen Fox, Ben C. Graffenberger, Margaret Johnson, Donna Giskaas LaVenture, Joyce Williams Pedersen, Diane E. Prichard, Dorothy Wonsler, Frank H. Wonsler.

1943, Roy Dover, Mickey Foley, Michael Penhollow.

1944, Darrell G. Dahlgren, Miriam Clark Fulton, Bev. Graffenberger, Susie Chopp Penhollow.

1945, Dorothy Cale, Lloyd Ellis, Charles Harkness, Martha Moore, Randall Moore, Ann L. Reynolds, Ruth K. Wilson.

Members without an arrival date, or have not lived in Central Oregon forty years.

Jean Angland, Doris E. Barney, Mickey C. Barnum, Thelma Benson, Vivian Norwood Blanchard, Coraliss M. Bower, Jack A. Bower, Shirley Boyd, Magdaline Britain, Willis Brittain, Fred Brumblay, William L. Byrum, W.D. Collins, Irene Couch, Marnie Erickson Dean, Mildred "Dee" Estabnet, Dave Fairbanks, Agnes Ferguson, Gerald Foster, Esther Franks, Jack Frederiksen, Pam Evans Frederiksen, Judith Frier, Echo Gustafson, Dorothy Harrington, Harry Harrington, Emma Miller Harris, Mable Hart, Heien L. Hein, Mary Hoke, Elmer Houck, Howard Houck, Dorothy Hollenbeck, Willard Hollenbeck, Calvin Hoover, John A. Hopper, Elma Monroe James, William H. James, Estrella Jeffries, Delores Jensen, Helene Jewell, Ann S. Johnson, Becky Johnson, Johnny Johnson, Marcia L. Kelley, Sally Ketchum, Vern Kuhl, Donald LaVenture, Thelma Luelling, Margaret Lundgren, Joe Macheta, Maude Mahoney, Suzane Maker, Ray L. Martin, Felice Mayne, Elizabeth McCormick, Della McKay, Gladys McLean, Zena Moura, Opal Gant Nelson.

John K. O'Leary, Lauretta O'Leary, Vera Owens, Lily Pickens, Ruth Potter, Harry Reese, E. Frances Robinson, Kimberlee Roden, Clifford Rose, Geoff Rosengarten, Virgil Ross, Walt Shores, Dale Slack, Delores Slack, Dolores Smith, Peggy Wonsler Spencer, Floyd Stacy, Leonice K. Stevenson, Margaret Swick, Mary E. Thompson, Colleen Triplett, Stuart J. Terry, Jean J. Vandeventer, Margaret A. Vandeventer, Nancy Vandeventer, William T. Wisbeck.

Memorial List 1985

1983, George Nelson.

1984, Ella Nelson, Vernon O. Clevenger.

1985

January, Percy Drost, Archie M. Brown, Marguerite Lyons, Pansey Riedel, Wilbur Sampels.

February, Lena Freund Bertram, Carl V. Erickson, Lillie Bogue Burton, Edith Berrigan Cothrell, Curtis Donahue.

March, Mary Edith Putnam, Blanche E. Wolgamott, Arvilla Murphy, Sharon Gumpert Lum, Ann Pedersen Fix.

April, H. E. "Jack" Masterson, Don Anderson, Frances Markel Smith.

May, James T. Price, Catherine Entrikin, Henry B. Colver, Loretta Masten Keith, Kenny Gales, Lorene V. Gales.

June, Lucille Van Matre McConnell

August, James M. Thompson, Herb Arthur Meeks, Helene T. Seems, Charles Wm. Sullivan.

cont. on pg. 7



—Courtesy, Diane Kulpinski, The Bulletin

**Queen Helen Tweet Evans
Deschutes Pioneers' Association, 1985**

by Helyn Van Huffel

Our Deschutes Pioneer Queen for 1985 is Helen Tweet Evans. She was born in Bend on May 29, 1906, in a little house just off Revere Avenue. Pioneer doctor U. C. Coe was in attendance. Her parents, Theodore Julius and Nellie Gertrude (Davis) Tweet, had married in The Dalles and come to Bend by horse and buggy, leading their milk cow and saddle horse.

Mr. Tweet filed on a timber claim on Turnalo Creek near the old brick yard and the family moved to a homestead there. He built the Red Rock Mill to work the timber claim and also was millwright at the Bend Flour Mill.

On Monday mornings Queen Helen rode into town with her father in the buggy in order to attend Reid School, now the Des Chutes Historical Center. She stayed with her great-grandparents, Thomas and Bella Tweet, during the week and returned home after school on Fridays with her father.

Her brother Howard was born at the homestead in 1907 and her Sister Irene in 1912.

Our Queen was a member of the class of 1926, the first to graduate from the new Bend High School which is now the school district administration building.

After graduating, she became a June bride. She married Ovid Evans, who was a certified lumber grader for Brooks-Scanlon Inc., and worked there through the depression.

In spare time, the couple started making and selling fishing flies from their home. In 1937 they established the Evans Fly Company and sold flies in Oregon, Washington, and Idaho. (Many a non-fisherman traveling on Third Street wondered just what the "Evans Fly Co." did). Additions to the store in 1940 and 1946 allowed space for a complete stock of sporting goods, a boat motor repair department and gun shop. They built their own custom-made rifles. Son Lloyd was the gunsmith.

The interior of the store was destroyed by fire in 1946. After the business was rebuilt and

restocked, the Evans Fly Company received recognition from the National Sporting Goods Association three different years.

They sold the business in 1963 and moved to a new home at Pringle Falls on the Deschutes River near LaPine. In August 1966, a tragedy took Ovid's life when he drowned in the river near their home.

Our Queen is a life member and past president of the Bend Soroptimist Club. She has served as Juvenile Director of the Degree of Honor Lodge, as chaplain of the Ladies of Elks and Little Deschutes Grange, as president of the LaPine Community Club and the Methodist Women. She is a member of the Oregon State and National Grange Associations, the LaPine Toastmasters Club and American Association of Retired Persons, LaPine Chapter.

Her hobbies are making quilts, latchhook rugs and needlepoint, wood carving and fly tying.

Besides her son, Lloyd, Queen Helen has a daughter, Kathryn (Mrs. Paul) Farnsworth, three grandchildren, five great-grandchildren, and one great-great-grandchild. She writes, "I could not ask for more!"

1985 Officers:

President.....Dale McMeen
Vice Pres.....Jack Brinson
Secretary.....Laura Wonser
Treasurer.....Helyn Van Huffel
Remembrance.....Carol Boyd

Gazette Editors...Keith & Donna Clark
Membership Rolls.....Laura Wonser

Deschutes Pioneers' Association
P. O. Box 508
Bend, Oregon 97709

Florence Silvis

The loss of Ila Silvis Grant Hopper this year brings to mind the memory of her mother, Florence Silvis — talented and temperamental artist wife of Charlie Silvis.

Florence came from Denver, Charlie from Montana. They met in Bend where they were married in 1914, according to Ila's biographical sketch in *A History of the Deschutes Country in Oregon** (The Deschutes County Historical Society, 1985).

Charlie sold insurance and real estate, but Florence was a professional painter — decorating china, sketching, doing almost anything artistic. (At the Sisters Fair in 1916 she donated a special prize: a piece of hand-painted china for the best two pounds of butter.) She taught painting, had her own art studio for years, was further an entertainer, a member of the prize-winning chorus at St. Louis World Fair in 1904.

Trained voices were scarce in Bend; her vibrant contralto was an integral part of many community functions. When Edgar Gilson and Gladys Brandenburg were married in 1918 at the Liberty Theater in Bend (he in army khaki and she in a Red Cross nurse uniform), Florence sang for the wedding. Donations totaling \$59.60 were given to The Bulletin's tobacco fund "for the boys over there."

Sometime between 1911 and 1914 Florence, her mother, and a niece moved next to my Grandfather Knickerbocker's Pinelawn Ranch in the Plainview community. Florence and Grandmother Kitty became fast friends. That friendship was often commemorated in later years in gifts of illustrated poems and ornamented china pieces. Indeed, her generous nature transferred the friendship to Grandmother's progeny and when Donna and I were married we too received hand-painted china and poetry, pieces we treasure today.

One fragment of one of Florence's gifts remains in memory, the last stanza of a poem for Kitty Knickerbocker:

"And you've stuck like a leech
Amid sorrows I've seen
Since we lived side-by-side
With tall pines in between."

As I recall, Grandmother, whose concept of leeches was unpleasant, always wrinkled her nose at that part. But her affection for Florence was not diminished, and she could at times quote the whole poem.

Charlie died in 1958, Florence in 1963. Both rest in the family plot at Pilot Butte Cemetery.

— Keith Clark

*Available at the Museum, Society Headquarters, or send \$27.50 plus \$2.00 postage to Box 5252 Bend, OR 97701.

The "Chinese Pumper"

To publicize a motion picture, "The Fire Brigade," shown at the Capitol Theater mid-June 1927, Bend Fire Dept. borrowed from Prineville Central Oregon's first fire engine, an 1883 model put on display in Bend.

Called a "Chinese Pumper," the engine is in use in Prineville's early days. The same type, a predecessor of steam pumps, was used in major cities across the United States, required hand labor to operate. Chinese, if available, were frequently drafted to furnish the motive power, especially at laundry fires, it is reported.

1985 marked the 75th anniversary of Redmond's incorporation. Special observances included in the celebrations displayed many early photographs. Here is another, coupled with excerpts from the *Redmond Spokesman*.

The *Redmond Spokesman*, whose first issue rolled off Redmond presses July 14, 1910, might have been better named the *Redmond Spectator*, for with vigilant eye it noted the growth of the area and of the little village into a corporate structure with all the trappings of a small city, over the years.

In September 1910 it reported that in construction of the railroad right-of-way "near Hillman" a mighty blast fired a large rock through the side of W.R. Davidson's house, landing on the bed their infant slept on. Fortunately, the baby was sleeping at its grandmother's house and thus escaped injury. Davidsons moved into a tent far enough away from the construction to be out of range until the construction crews passed.

September 15 several items made front page — a wagon road was planned between Redmond and Prineville, a 17-mile stretch. The Redmond Commercial Club raised \$300.00, Crook County gave \$500.00, Prineville's Commercial Club agreed to \$150.00. E.B. Williams was awarded the contract, with work to begin within 60 days. (That wagon road went east from Redmond's A Street, can still be traversed in spots today.)

Item 2 — Carl Woods of Shaniko would establish a wood yard and feed corral on E Street between Fourth and Fifth.

Item 3 — Dr. J.F. Hosch warned all persons using water from irrigating ditches to boil it before drinking.

October 6th the *Spokesman* noted the purchase by Crook County Water, Light and Power of the Cline Falls Power Company — a purchase which included water rights, 1360 acres of land, and 40 acres at Steelhead Falls. A transmission line would be built to Redmond from a 550 horsepower hydro plant. Price was \$55,000. Riding the optimism of all that prospective power, the *Spokesman*, in its October 13 issue, proposed construction of an electric railroad to Prineville!

By January 5, 1911 the little newspaper could point with pride to five electric street lights on Sixth Street, though the illumination was turned off after midnight.

In 1911 irrigated land was selling for \$40.00 an acre: "Nearly every day a number of autos can be seen at the corner of 6th and E streets," waiting to take prospective land buyers to locations.

And a sign of the times — April 27, 1911 — an auto from Madras with five passengers went into the main irrigation canal on E Street. No one was hurt when the car overturned, but everybody got wet. "Steering gear failure" was blamed. (Loose nut?)

SPRING, 1935

Semi-precious polished stones were hailed as a new industry for Central Oregon.

A big (1,859) herd of white-face steers reached Bend stockyards after a 100-mile cat-tail drive — the last of the open range era.

Twenty-three girls were nominated for the Houk Motor Company's popularity contest — among them Lois Maker and Eloise LeBlanc.

The Bend Elks played on an improved O'Donnell Field, with funds coming from State Emergency Relief Administration. The field was dedicated May 4, 1935; Elks played Hop Gold team from Portland, won.



Sixth Street, Redmond — 1908

-Deschutes County Historical Society.
Don Ellis copy from Dolly Teater collection.

First Real Water System

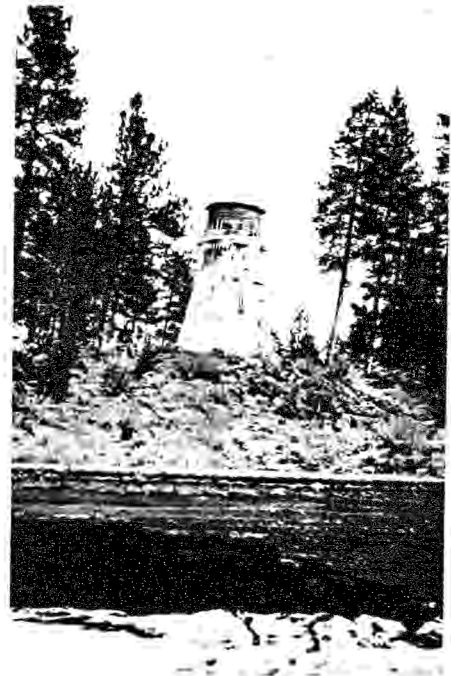
Bend Water, Light and Power Company, organized in 1904, was granted a city franchise in January, 1906. A.L. Goodwillie, Bend mayor, was president; E.F. Batten, treasurer; H.C. Ellis, secretary. These three subscribed capital stock of \$5,000 to purchase equipment to lift water from the Deschutes River and store it in a 30,000 gallon wooden tank which L.M. McReynolds, Anton Aune and Theodore Aune erected on the volcanic bump just north of Franklin Ave., known then first as "Water Tower Hill," and later "Hospital Hill."

A steam pump took water just below the power plant and pumped it through 9,000 feet of main, eight, six, and four inches in diameter, serving the downtown business area and adjacent residences.

The water tank was designed for emergency use only; in case the pump failed its 45-pound pressure, gravity from the tank would provide service.

As the photograph demonstrates, prolonged winter cold can cause problems! The tank was torn down in May of 1922 by M.J. Danielson by order of T.H. Foley, manager of the power company. St. Charles Hospital's new building was completed in 1921.

Prior to construction of the water tower, water was delivered at 25 cents per barrel by "Lucky" Baldwin and his team of horses.



Mem. List, cont. from pg. 5

September, Everett Chase, Inga Sather Morton, Leland Erickson.

October, Steve M. Jackson.

November, Charles William Boyd, May D. Triplett Fryrear, Ila Silvis Hopper, Ernest Calvin Russell, Sibert Anderson.

December, Clare M. Griffith.

The *Bend Bulletin*, September 1906, announced that William Boegli of the Cove orchards had 70 boxes of fresh tomatoes to sell.

Co. I., cont. from pg. 2

Robert J., Norton, LeRoy E., Olson, Arnold, Parker, Laurence T., Perry, Marvin R., Phipps, Boyd N., Riddell, Rex D., Robideaux, Vernon H., Rogers, Elmer L., Rogers, Harold C., Rowell, Louis F., Runningen, Arthur J., Russell, Robert W., Seiber, Ralph, Seiber, Roy C., Smith, Aaron J., Spangler, Charles L., Spring, Charles T., Stookey, William A., Stowe, Delbert D., Sullivan, Paul E., Trotter, Jerry E., Webber, Marion L., Whitten, Lowell E.

In a fit of Hibernian enthusiasm Frank McCaffery celebrated St. Patrick's Day, March 19, 1914, by painting his auto an Irish green. Then he traded it for 80 acres of raw Powell Butte land.



Early Laidlaw street scene.

-Deschutes County Historical Society

Mesa Genealogical Library
464 East 1st Ave.
Mesa, Arizona 85204



-Deschutes County Historical Society
Local children on "Jack" at Hampton, 1918: L-R — Gladys Meeks, Herbert Meeks, Beth Stauffer, Idamae Stauffer, J. Willburn Meeks, Wilhelmina Meeks, Nedie Stauffer. (Photo copied by Don Ellis from Herb Meeks Collection.)

The 1916 Sisters Fair

In the years before the railroad came to Central Oregon, community leadership, including newspapers, touted their little villages with all the vigor, imagination, and non-adherence to truth of a carnival barker at a side show. "Boosters" they were called, and boost they did, then and after the rails were laid.

Population was the immediate prize; growth and security and wealth (and who knew what else?) were the long-range goals. To that end, events which publicized communities and strengthened cooperation between them were desirable. Redmond had its potato show, dating from 1911. Bend hosted celebrations of various kinds, particularly on the Fourth of July. Prineville had the Crook County Fair. Tumalo held their sixth annual fair September 12, 1916.

In the western edge of Crook County, the Sisters community decided to have its first fair in 1914. October 4 and 5, 1916, at the third annual event, contributions from both Bend and Redmond were noted, together with local funding for prizes. In the words of the Sisters Fair Association, "The object [is] the betterment of the community at large and to demonstrate to both local and outside visitors what our resources are and at the same time encourage the producer in improving the grade of his produce. This year's race program and amusements will be the best ever pulled off in Crook County."

Officers that year were J.P. Duckett, president; Dr. H.M. Robbins, secretary; J.M. Parker, assistant secretary; and H.E. Vincent, treasurer. The Board of Directors membership: R.J. Skelton, George F. Cyrus, and W.W. Van Matre. Price of admission was 50 cents for adults, children under 15 and over 10 years paid 25 cents. A double carriage and driver paid the same price as an automobile — \$1.00 — to get in. There was also extra admission to the grandstand.

Local Sisters businessmen advertised in the "Prize List and Race Program": Claude Gist's hotel, J.P. Duckett's lumber company, W.G. Ramsower's blacksmith shop ("successor to Hardy K. Allen"), John Dennis' Hotel Sisters, J.M. Parker's general store, R.M. Radding's Satisfaction Store ("successor to Robert Smith"), Leithauser's Pool Hall and Barber Shop, Mary Spark's Furniture and Hardware Store, George Aitken's confectionery, drug store, stationery, and sporting goods.

Bend and Redmond businessmen subscribed also to the program, with advertising. Bend cash donations totaled \$196.00; Sisters ("incomplete") was \$245.00. Both gave "special" donations of cash or produce, as did Redmond.

There were regulations and rules and the entertainment neatly divided into the exhibits and the racing. The program listed no bronc riding or rodeo events, formally that is.

The fair produce divisions were traditional: vegetables (Arthur Templeton, Supt.) included prizes for watermelons; poultry (E.M. Harrington, Supt.) provided for Plymouth Rocks, Leghorns, Minorcas, Bantams, Rhode Island Reds, Buff Orpingtons, geese, ducks, guineas and turkeys; swine (C.L. Branton, Supt.) allowed Poland Chinas, Duroc-Jerseys, Berkshires, and "Any Breed"; horticulture (Mrs. J.H. Taylor, Supt.) exhibited apples and plums. (Do you remember Baldwins, Spitzenburgs, Gravensteins, Northern Spies, Winesaps, and Seek-No-Furthers?)

There were exhibits of embroidery, crochet, tatting, Indian beadwork, of flowers, sheep, cattle, horses, canning. And there was a miniature reflection of these in a "Children Under 15 Years" department.

Perit Huntington was superintendent of the art division, which included china painting. There was even a baby show with first and second prizes given to the "best developed boy or girl" in four age categories, beginning at six

months and ending at under three years.

Of course the crowds also took in the races two days, first and second prizes for these first day events: Quarter Mile Dash "free for all" — \$35.00 first, \$15.00 second; Trot or Pace "free for all" — \$50.00 first, \$20.00 second, \$5.00 third — mile heats, two out of three; Half Mile "free for all" — \$35.00 first, \$15.00 second; Squaw Race, one-half mile — \$10.00 and \$5.00; Two Year Old Stakes — \$15.00 first, \$10.00 second.

On the second day, with comparable purses, the races were: Three Furlongs, Ladies Race (Quarter Mile), Saddle Horse Race (professional riders barred, horse to carry 75 pounds), Pace or Trot, and Indian Race (Half Mile). The Warm Springs were invited. The Race Committee was B.L. Tone, A.A. West, and C.P. Bailey. Other fair officials were Mrs. J.P. Duckett, Mrs. H.K. Allen, W.D. Pugh, Carl Woods, Mrs. W.D. Pugh, Mrs. H.E. Vincent, and Mrs. C. Ward.

P.M. Reedy of Redmond's Central Oregon Garage entered his children in the baby contest. The youngest got 99½ percent out of 100 and the oldest, 98! Mrs. Harry Corbett of Portland financed and managed the baby show, brought two women physicians from Portland to judge the entries.

And W.W. Van Matre of Cloverdale won first prize (\$15.00) for the best general farm display.

SPRING, 1935

Rudy Brentano headed Bend's volunteer firemen.

Dr. Barney Ferrell died; he first came to Bend in 1906.

The Bend School District offered the old Central School to Deschutes County for a court house.