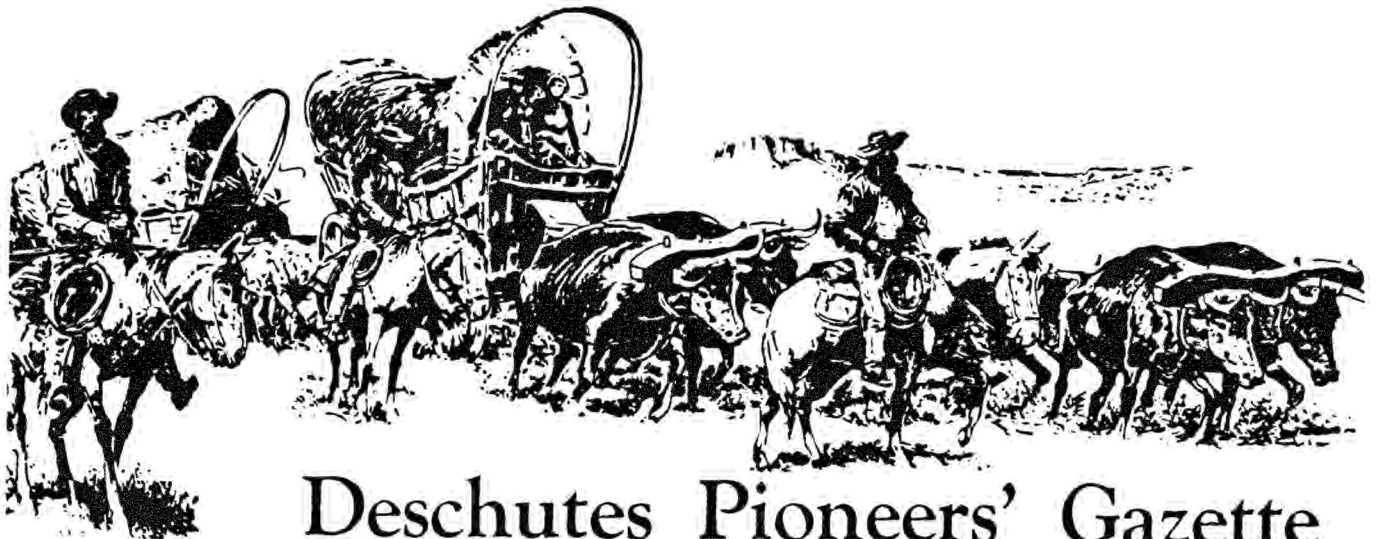


SE 2998285



# Deschutes Pioneers' Gazette

VOL. 1

JANUARY, 1988

NO. 45



Wall Street, Bend, Oregon

With smoke plumes flying from the mills and parallel parking, the 1920's Wall Street business district projects a booming economy. New buildings crowd older frame remnants of the earlier village. The photograph was taken from the height of the Pilot Butte Inn on a sunny but smokey day before February, 1929, when the J. C. Penney building replaced Lara's store shown here at the corner of Wall and Oregon. (A more accurate date would be welcome.) It appears Bennett's general merchandise was in the Lara building when this picture was made.

—Robert W. Sawyer Collection  
Deschutes County Historical Society

BC 1329247

## CIRCUS DAYS

Long ago, there was a point in the summer, neither zenith nor nadir, but about halfway between, when boredom got into bed with a boy at night and rode on his shoulder all the next day. The days seemed interminable because there was nothing to anticipate; Christmas was light years away, Kirtsis swimming tank was closed; there was no loose theater money; the outlook was nearly terminal.

Then, in one of those blessed and rare moments that restore faith in that Deity whose special benediction drops upon boys, in a splash of bright primary colors nailed to a corner power pole, in letters three inches high, a word which transformed the whole gloomy scene into sweet pastels — CIRCUS!

A real circus! Unloaded from its special railroad cars at the siding on the east end of Staats' pasture near present DAW plywood plant along Colorado Avenue. It was overwhelming, with exotic animals, bright wagons, painted clowns, aerialists, acrobats in tights and spangles, with strong, pungent smells and sounds, and a mammoth tent to hold the acts, and above all the soaring brassy notes of the calliope. Unforgettably grand!

The next one, and numerous subsequent carnivals and shows, set up on the east side of the SP&S track northeast of Greenwood on O'Donnell Field, which also served as the local baseball field. One of the last circuses there, just before World War II, featured an aging Tom Mix.

But Bend's first real circus came in July, 1912, two days after the Fourth, riding on the ten-month-old Oregon Trunk rail line in from the north. It was "Kit Carson's Buffalo Ranch Wild West and Trained Wild Animal Exhibition" whose advertising could have been borrowed from a Buffalo Bill Cody flyer.

There were other notable appearances. In July, 1917, Cole Bros. Circus was a part of the national birthday celebration, advertising contortionists, tumblers, gymnasts, clowns, equestrians and equestriennes, aerialists and leapers. "1,000 men, women and horses!", rare wild animals, tents which could seat 10,000 people and which were "absolutely sun and waterproof". They paraded in the morning, gave performances at 2:00 and 8:00 p. m., were torn down and gone the next day, leaving a residue of hay wisps, pine sawdust, and memories.

Al G. Barnes came the next year in June, 1918, with 4 rings (103 acts), 1,200 wild animals, 600 horses, and 500 people. It took 48 railroad cars to transport the show. The attenuated parade threading through Bend streets was more than a mile long. Local customers saw 65 wild animal acts, with female trainers. Miss Venus Fashion entered a cage with 30 lions in it and placed her head in each one's mouth!

Miss Mable Stark wrestled a full-grown royal Bengal tiger. Another appearance featured Vera Earle, former star of the Boston opera. There were 6 bands, 2 steam calliopes.

Barnes paid his 500 employees by the week and that Saturday much of that money went into Bend cash registers. Mr. Barnes attributed his success to hard work and insight into the paying public.

In 1921 Palmer Bros.' 3-ring wild animal circus came in August, with 20 special rail cars,



—Deschutes County Historical Society

The original Redmond Hotel, 13 rooms, was built in the spring of 1905 for Frank Rowlee and L. C. Whitted. In 1910 additional rooms were added over the Jones Land Company office. More expansion—a pool and billiard hall—was completed in 1911. By that year the structure which appears in the photograph was externally complete: 125 feet on 6th Street and 80 feet on Evergreen (then E) Street. The entire upper floor was taken up with 45 bedrooms. Mayor H. F. Jones was the owner and operator.

That structure burned in 1927, to be replaced by the present brick structure restored this year. Next to the old Redmond Hotel is the Atkinson Building and then the Redmond Garage. The Hiway Theater in the Atkinson Building, once owned and operated by Claude Kelley, ultimately became Milt Odem's Mayfair Theater.

Note sidewalk gas pump outside the Redmond Garage, selling Red Crown gas. Across the street was an office of the **Redmond Spokesman** which remarked in February 1927 that parking in downtown Redmond was a problem.

## BUCKLEY EXPRESS

Joe and Bill Buckley's "Buckley Express" from Shaniko to Bend provided daily service both ways beginning in December, 1906. All goods had to be shipped in by horse-drawn freight to Madras, Metolius, Culver, Forrest, Redmond, Laidlaw, and Bend. Another older line ran to Prineville where freight was sent on to the south as far as Lakeview. A spur line in 1908 carried freight to Sisters.

At the time there were two stage lines from Shaniko to Bend, and several freight outfits often pulling two or more laden wagons behind eight to ten heavy horses.

And the going was rough. William Buckley in early December, 1910, had to unload five times between Shaniko and Redmond to get out of the mud holes along the route. That freight road came down Cow Canyon, stayed east of the present highway to Madras. It swung by present Haystack Reservoir's west side, past the site of old Culver, then south to Crooked River where it crossed at Trail Crossing. On the south rim the freight road intersected the WV&CMWR route from Sisters to Prineville.

That freight line was short lived. Auto traffic was beginning to follow or improve the freight roads, and the Oregon Trunk was building up from the north. The rails arrived at Redmond the last of September, 1911. Railroad Day was September 30. By November 6 the first large freight shipments had arrived — 60 carload all — consigned to merchants in Redmond, Prineville, and Sisters. But horse-drawn freight served the communities beyond the rails' reach until motor trucks appeared.

providing another street parade a mile in length. They, too, gave afternoon and evening performances.

Al G. Barnes Circus came again in July 1927, erecting the big top in the Staats' pasture along Colorado and Sisemore. In cages and on the grounds were elephants, lions, tigers, leopards, pumas, "waltzing horses, dancing Shetlands, prancing donkeys, singing mules", bears, something called the "Washington jaguar", silver foxes, deer, coyotes, wolves, zebras, kangaroos, giraffes, birds, snakes, monkeys and apes. There was Joe Martin, the "famous gorilla man"; Luiyu Chiang, a Chinese giant who stood 9 feet, 11 inches!; Bavarian midgets 24 inches tall; animal trainers, acrobats, aerialists, tight-wire performers, cowboys and famous riders. Something for everyone. Indeed, it was better than a zoo, providing for small residents of the county their first real sight of real animals known to them before only in picture books.

Seventy-five kids received free circus tickets earned by selling one three-months' subscription to **The Bend Bulletin**.

Barnes visited Bend again in July, 1929. And there were circuses until the nation and Central Oregon went to war in 1941. Now, rising costs and television programming have combined to reduce the American circus to once-a-year performances in large cities like Portland. It has been over 50 years since the circus cars used the siding which served Brooks-Scanlon and Shevlin-Hixon mills. And the old time circus in Central Oregon has joined the shadowy parade of long ago wild west riders to the horizon and beyond.

## John C. Todd Remembered WV & CMWR and the Winter of 1884

This year's *Gazette* continues publication of a series of letters written to Phil Brogan, Sr., by John C. Todd in the mid-1950s. The letters cover a number of little-known aspects of Central Oregon history reflecting John C. Todd's and his father John Y. Todd's activities here. Some editing has been done.

Friend Phil: The fellow who wrote you from Corvallis was thirty years later than when the first cabin was built at Cache (Cash) Creek, which was in 1866. They may have built a new and better one in 1896. Their was a write up editorialized a year or so ago in the "Oregonian" stating the first wagon to make it across the old Santiam road was that taking supplies for the soldiers who established Camp Polk in 1865, the soldiers helping from Fish lake east to make the road passable. The "write up" stated those soldiers that they were on See-seek-wa Creek instead of Squaw Creek. Squaw Creek drains from the North Sister and See-seek-wa from Mt. Jefferson.

Wasent that a crazy deal sending foot soldiers out to fight Indians? I suppose one reason was they had no way to feed horses in winter.

The next year, 1866, the road builders built the cabin and toll gate at Cash Creek and until they went out of business had a man there in summer to collect the cash. I wish some one who knows, maybe the Hi-Way Dept. would know, would tell when that toll road company went out of existence and how the state got permission to build thru and on that gov't. granted land.\* The road Co. were supposed to get every other section of land located on each side of the road for three miles or six miles on one side. That was a bigger graft than the S. P. R. R. because it is my under standing their was no toll besides. Any place they could get a wagon they called a road. From the Willamette Valley to Ontario and they did not go on a straight line but wandered around where the good valley land was. They were supposed to be headed for Prineville when they came out of the Mts. but instead of going straight east, they veered north and bridged the Deschutes river at the Diatomite mine, then thru the Terrebonne section and on east thru the lower Crooked river valley — Bridge built 1866.

They kept working on the road during 1866 and by 1867 people commenced to travel it. The first settlers in Central Oregon came over and settled on Mill Creek above Prineville that year but old Chief Paulina scared them off. The next year they brought their wimmen and stayed. Getting back to the land grant, when I was at Bend a dozen or so yrs ago it was said that Louis Hill, son of Jim the Empire builder, owned that land grant timber. . . . John.

P. S. : How long should an article be tis hard to get stopped when one starts to unwind old lgs stored in one's head over 50 yrs. Strange how one can remember things that happened eons ago and forget things that occurred a short time ago.

Seasons greeting to you and that fine wife of yours. I never blamed you for liking her. J. C. T.

\*(The answers to John C. Todd's questions

have been given clearly in Cleon Clark's *History of the Willamette Valley and Cascade Mountain Wagon Road*, produced by the Deschutes County Historical Society in 1987.)

Friend Phil: . . .

I was not very old in 1884, but I can well remember that winter. We were living where the dam is (now) on the Ochoco. JY (John Y. Todd) still had Squaw flat but most of our cattle were taken to the Ochoco where we had feed — don't suppose we had more than a 100 head. You see JY was getting started again after the Cheyenne bust. I don't remember how deep the snow was on the level but remember it was over my head by the trail from house to the barn.

What made the storm such a stock killer was such fierce cold before the snow came, then continued cold for so long after wards. Those Squaw Creekers did not have much stock and less to feed them. JY and I were over to Squaw flat a way along in March; we went over to the Metolius dist. to see what we could see and ran on to several head of cattle huddled under a tree frozen so stiff they had not fell down, just leaning against each other. Snow had crusted around them. That was in March, 1884.

I never heard of many tougher winters than 1884. . . . guess the one that took the first bridge JY built at Sherars was a lalalalooser in the spring of 1862 — deep snow that went off in a flood. All JY had left was 25 mules that had paped thru to grass.

The reason I remember 1884 was several things happened. That fall JY had traded a whole wagon box full of hogs for a cream colored pony for us kids. I kept the trail from the house to the barn hot looking after him. JY had a half-dozen or more saddle horses but only one Mother would let me ride by myself so I had great hopes of going places on the palmino pony as he had been the Dodson girls pony and was supposed to be absolutly gentle, but one day my middle sister, the late Mrs. Eva Bennett, was riding him, carrying a dozen of eggs; he scared and threw both her and the eggs. She got up and kicked him in the stomach as she had seen the cowboys do, which must have made him powerful mad as he got so the cowboys could not ride him. We traded him to Lige Sparks of Sparks lake, who had sheep on what is now known as the Long Hollow ranch NE of Sisters. He said the pony got so he would buck the packs off. The next spring Mother bought us a Squaw horse — one that had been raised around an Indian camp. Think it was about two yrs old. She offered the old Indian \$5 in silver for the colt. The old buck wanted more money; he put the \$5 silver dollars down by the colt's hoof to show her how small a pile of money for so much horse, so Mother put another silver dollar on the pile and the deal was made. This little mare turned out to be a dandy, quite different from the lousy colt she was when we got her. . . .

Did I tell you about talking with Cortus Allen just before he died and he telling me how come the old cabin in Drake Park. Said Steve Staats

In addition to the great milling operations of Brooks-Scanlon and Shevlin-Hixon in 1917, a number of small sawmills were also operating within a six-mile radius of Bend. Listed on the 1917 Sanborn Map are Gardner-Wilkenson Lumber Company Mill, Anderson's Saw Mill, McKinley-Hampton Saw Mill, and Orewilers Saw Mill.

## Timber Resource Base

From the January 3, 1908 *Bend Bulletin*, Charles D. Rowe, Editor, came an analysis of the timber resource base, the foundation of future economy for the tiny village on the Deschutes:

"There are adjacent to Bend 3,500,000 acres of timber land, which will average 20,000 feet to the acre. That means 70 billion feet of timber tributary to this place. Bend has a site for a mill pond with a capacity sufficient to accommodate five mills each sawing 1,000,000 feet a day. A little figuring on that basis gives some very interesting results. If these five mills were in operation and each sawing 1,000,000 feet a day for 300 days of each year, it would require in round figures 50 years to saw up the entire supply. . . .

A mill with a capacity of 1,000,000 feet a day will require a force of about 3,500 men in its logging and milling operations. The five mills would require 17,500 men. At an average wage of \$3.00 per day that would mean a daily payroll of \$52,500 or a monthly payroll (26 working days) of \$1,315,00, or a yearly payroll of \$15,780,00."

Subsequent events proved the writer's foresight to be remarkably close — the only serious miscalculation was the impact of new technology on employment needs.

and he built it and the Staats cabin after they came in 1877. The idea was to have adjoining places but they got their cabins to close together to homestead when land was surveyed so both were on the Staats place. Staats cabin down near where Miller Lbr. Co barn is or was.

After Steve Staats went in or was to go in the sheep business at Powell Buttes (shot and killed there in 1883) and Cort Allen had gone up to the big meadows where his father had located, Bill Staats, Sr. took over the Staats place. The cabin in Drake Park was used by anybody. One winter their was a couple of brothers by the name of Martin camped. They were hunters, killed deer for their hides. Another winter Dee Springer and Douglass Strobe brought some cattle from the valley. They wintered in the cabin. In the spring JY bought the cattle and hired Dee, may be traded Ann\* for cattle. — John.

\*Dee Springer married Ann Todd, John C.'s sister, the first recorded marriage in Crook County, May 1883.

## Deschutes Pioneers' Association Membership—1987

- 1888, Isa Corum Freeman, Queen 1962.
- 1890, R. H. McCallister.
- 1898, Mahlon A. Couch, Joe C. Turner, Peggy Turner.
- 1900, Anna Long Linebaugh, Martha Long, Queen 1978.
- 1901, Katie Stephens.
- 1902, Ann McDonald Cloer, Queen 1982, Mary Silvers Couch, Claudia Triplett Martin, Past Secretary.
- 1903, Helen Filey Krogfos, Julius (Max) Mendenhall, Cora Sather, John Sather.
- 1904, John Franks, Eldora Eakman Glascock, Lois Triplett Holliday, Freda Clark McDaniel, Velma Edwards Moffitt, Roy E. Neff, Harold Sather.
- 1905, Carol Boyd, President 1972, Past Treasurer 1969-70, Remembrance, Edna Boyd Brinson, President 1950, Pauline Windom King, James McNeely, Cecil C. Moore, President 1965, Charlcia Mendenhall Moore, Fannie Regnier, Ida Niswonger Reynolds, Queen 1984, Elmer Charles Smith.
- 1906, Rhonda Hoover Dake, Helen Tweet Evans, Past Secretary, Queen 1985, Martha Houston Sherman, W. J. Bryan Triplett.
- 1907, Wilma Ray Beaver, Lena Bradley Gowdy, Helen Reed Helfrich, Anne Boyd Ibison, Claude H. Kelley, President 1960-61, Hugh Kelley, Orville E. Shults, Edna Ogle Skjersaa, Queen 1987, Emory V. Starr.
- 1908, Alvin Cyrus, Tomi Nichols Daron, Howell Roberts, Thelma Zumwalt Roberts, Ted Sather, Claudia Constable Scruggs.
- 1909, Harlow E. Allen, Boise Aune, Nellie Bemby, Sam Boyce, Kathleen Corliss, LeRoy S. Fox, President 1951, Sophia Becker Gibson, Queen 1980, Margaret Coffelt Hackleman, Olga Alt Norcott, Marjorie Smith, Membership Chairman, LaDessa Chapman Waller.
- 1910, Lorene Long Entriiken, Mable Dahle Franks, Vernon Gould, Nellie Graffenberger, Ralph Grimes, Raymond Gumpert, Bonnie D. Hollinshead, Marie Miller Levitt, Dudley Long, Leona McKay, Loren John Masten, John Miller, Maude Compton Monical, Dorothy Moore Nelson, Herbert Nelson, Veerland A. Ridgley, Frances Roberts, Buford Rollins, Rodney Rosebrook, President 1976, Cal R. Smith, Richard M. Smith, Rose Miller Stanchfield, Dorothy Teater, Alfred H. Triplett, President 1980, Alice Holmes Wilkinson, Elsie Horn Williams, Queen 1975.
- 1911, Kenneth C. Bennett, Leta Mason Culler Giskaas, Virginia H. Elliott, Robert Foley, President 1982, Willford Fordham, Josephine G. Godon, Virgil Henkle, President 1984, Priday Holmes, President 1978, Edith Gove Junor, Margaret Ireland Keyes, Donald Larsen, Douglas Larsen, Jim Lemke, Gordon McKay, Cora D. McLearn, George Norcott, May Godon O'Keefe, Steve W. Sprague, William H. Staats, Mable Foster Sullivan, Maurice Ward.
- 1912, Clara Van Matre Anderson, Maude Eaton Anderson, Melvin Barcus, Winifred J. Creighton, Elnora Dodson, Queen 1979, Maryann Crawford Fulton, Dee Haines, LaVerne Gove Hanshaw, Irene Tweet Houck, George W. Huettl, Lois Harrington King, Mildred Hoover Kuhl, Leora Connarn McNeely, Bernice L. Masten, Leola Rose, Homer Slack, Jeannette Keyes Stollmack, Kathryn Orr Terry, Marjorie Hoover Tromblee, Queen 1983, Milford Wallenberg, Gertrude Whipple, Edith White.
- 1913, Laurene Boardman, Harry P. Brandon, Darwin H. Clark, Johnnie Crawford, James F. Finley, Violet Mayne Franks, Queen 1976, Howard Helgeson, Spencer Ketchum, Dale McMeen, President 1985, Lloyd Mayne, Ruth Garske Rosengard, Alice Cove Schmitt, Emma Miller Taylor, Laura Lakin Wonsler, Secretary 1960-87.
- 1914, Alice Bishop, Malcolm Buick, Vance Coyner, Irene Buchwalter Day, Bruce Gilbert, Lois Maker Gumpert, Ray Harrington, Letha Holt Jacobson, Hazel McLouth Longham, Goldie Mayne, Lena Freeman Myers, Sylvia K. Petersen, Olive Williams, Gertrude Miller Zufelt.
- 1915, Edith Caughey, Fred Fulton, Lawrence Gales, Zaida Robideax Honeycutt, Robert S. Johnson, Viola Harrington Ketchum, Gerald McCann, Lucille Brown Meeks, Robert B. Miles, Helen Mogan, Mary Munier, Vivian Friedly Prophet, Carol Brobert Snider, Eunice DeBoer Thompson, Elsie Urquidez, Hazel Stingley Ward, Idella Ware, Doretta Nichols Watrous.
- 1916, Roy Benson, Delores Metzger Bullat, Vern Carlon, Inez Short Collins, Dr. Roy Gilson, Madge Smith Glasgow, Ben Graffenberger, President 1977, Elizabeth Marsden Gulick, Kenneth C. Gulick, Harold Gutendorf, Clara Soderstrom Haglund, Dorothy Edwards Hatch, Betty Riedel Huettl, Letha Harrington Huettl, Norval Hufstader, Mildred Kelley, Lester K. Marx, Leo Mickel, Elnora Moyes, Edith Soderstrom Pease, Mable Anderson Rasmussen, Charles Laurence Varco, Jane Ferrell Wells, Mildred West, Rae Beaver Wilson.
- 1917, Wade Byers, Calvin Charmon, Wilma Dawson Charmon, Katherine Ferrell Dukes, Eileen Duffy, George Fulton, Lola Heden, Marian Herbert, Evelyn Parsons Howard, Helen McLaughlin Jensen, Dolly Henderson Johnson, Clara Kerns, Edith Kostol, Queen 1986, Frances Pavick Lee, Robert E. Lyons, Lucie Peiers McGlumphy, Harry Monical, Hazel Kulstad Munkers, Vernita Parker, Clyde Sholes, Grace Cleveland Skjersaa, Mary Ruehr Werner.
- 1918, Milton Anderson, Marie Barnum, Eunice Dugan Benson, Pauline Biladeau, Bonita Riedel Brandon, Helen Varco Brown, Nina Crouch, Louise Joanis Devenport, Deon Brown Drost, George Drost, Bernice Haines Durfee, John Elliott, Mary Joanis Fenscottero, Collena Spangler Gales, Margaret Grimes, Helen Donavon Hemmingsen, Wilda Lane Henkle, Ross Houck, Arlene Hultengren, Wilfred Raymond Joanis, Rose Kraft, June E. Masten, Forrest E. Putnam, Bill Raper, Naomi Stokoe Reed, Mary Grace Davidson Scott, Melvin J. Scott, Norman Skjersaa, Helyn Long Van Huffel, Treasurer 1979-87, Helen Joanis Wavelet.
- 1919, Frances Allen, Lowell W. Aplin, Margaret Kribs Bagley, Vivian Rasmussen Benson, Harold W. Bradbury, Sally Erickson Cain, Millie Rastovich Chopp, Thedora Cianfield, Evelyn Zumwalt Elliott, Irene Wells Foley, Jack Gertson, June Helgeson, Carl Holt, Avon Kittleson, Elaine Rasmussen Langworthy, Eva Marie Lennox, Fernette Parkey McDowell, Lowell McMeen, Tom Merchant, William E. Miller, Orville C. Miltenberger, Oliver Pickens, Victor Povey, Minnie Povey, Paul Riedel, Sarah Hohnstein Shumway, Vern Singleton, John Susac, Dean H. Webb, Evelyn Wanichek Yeoman.
- 1920, Maurice England, Eleanor Bechen, Jack G. Brinson, Vadabelle Dodson Brumblay, Velma Buckingham, Ralph Cooper, Alta C. Cullison, Marguerite Elder, Ernie Gast, Evelyn Gasbar, Secretary 1987, Virginia Gray, Helmer Gustafson, President 1981, Della Vinal Hamby, R. Wayne Hamby, Dorothy Mehl Hosteller, Gordon C. James, Catherine Larsen, Norville May, Paul A. McCormick, Phil Philbrook, Willis G. Rice, Abe Rickman, Neola Reinhart Ross, LaVon Lee Stillwell.
- 1921, Marion C. Armstrong, Florence Bauer, Calvin Boyd, Marcus Corwin, Roberta Elliott Coxen, Mary Foster Duncan, Hazel Nelson Hollenbeck, Cecilia Joanis Houck, Marie H. Knight, Tom M. Larsen, Fred Lieuallen, Harold Lee Maker, Jr., Don Miltenberger, Rita Chute O'Grady, Vivian Fissel Raycraft, Elsie M. Roe, Fern Gilbert Romberg, Warren Sholes, Wilma Hollinshead Wisbeck.
- 1922, Grace Abbott, George Baker, Leo Bishop, Joyce Vandevert Brown, Mahlon I. Couch, Harlon Coxen, Dorothy Cundell Crocker, Gladys Davis, L. W. Gassner, Bud Holliday, Adelbert Hunter, Lowell A. Jensen, President 1957, Aletha Kline, Lorraine Joanis Lotti, Douglas B. Long, Dr. Vern R. Manny, Galey Marshall, Idella Slate Marshall, Delorus Tromblee Mills, Josephine Moore, Melvin Munkers, President 1974-75, Joann Vandevert Orr, Harley Owens, Einer Selfors, Edna C. Shepard, Julius Steen, Wendell Wolgamott.
- 1923, Lois Cady, Erma Ellis, Edna Fossen, Darrell Gibson, Hal Goldsmith, Phyllis Herrling, Barbara Weeks Hufstader, Frances W. James, Ivan Jensen, Jack Kittredge, Barbara Fuller Kremers, Howard Krog, John Kulstad, Robert Kulstad, Byron Logan, Nora B. Loree, Georgia Sharp Lyons, Esther McGimsey, Omar L. Moffitt, Helen Grindle Petty, Maurine Conklin Ratliff, Melda Smith Sauron, Peggy Magill Sawyer, Betty Daly Seems, Rozella Smith, Dorothy Isham Sullivan, Irwin Taylor, Marguerite Joyce Tharp, Floyd Zink.
- 1924, Evelyn Hanson Allen, Beulah Bockman, Lucille Byers, Treva Kaufman Fairbanks, Alph Hanson, Lily Hollinshead, Queen 1981, Robert Joanis, Robert Johnson, Florence Kamisky, John Lane, Catherine Carlin Mattson, Irene Peters, Velma Spickelmier Povey, Charles Raycraft, George Raycraft, Ramona Bockman Sellers, Mildred Sholes, Ruth Slack, Ruth A. Stover, Mary Byland Thompson.
- 1925, Everett Apling, June Bach, Keith Clark, Isabelle Crocker, Sofie Larsen Curtis, Neil Davis, Lois Dearth, Nellie Fountain Drost, Eva Dodson Gassner, Maxine Iverson, Rena Janes, Doris Fitch Kittredge, Dee Klassen, Eleanor Workman Long, Lucille McMeen, Bernice Nelson, Gladys E. Nordby, Robert Nordby, Thelma Perry O'Day, Reuel O'Leary, Walter Petersen, Jeanice Pursel Raper, Norma Lyons Raycraft, Neil Constable Reese, Loyal Rhodes, Gus Roats, Margaret Shores, Bea Spencer, Helen Putnam Steen, Olive Adams Waterman.
- 1926, Ona Blakley, Mary Bradetich, Evelyn Brookings, Alma Jean Burleigh, M<sup>rs</sup> McCole Buxton, Stella Ward Chlopeck, Ir. Rude Clark, Donna Werner Clark, Elizabeth Edmison, Florence Guddat, Patricia Moore Howard, Paula Loree Lewis, Frank Loggan, Dorothy Carver Mellin, Francis O'Leary, Helen Peak, Dan Rastovich, Ruth Conklin Rosengarten, Irene Ryman, Agnes Selfors.

1927, Grant Barney, Mary Putnam Davis, Lucille Euston, Lloyd Evans, Oertel Fix, Patricia Muir Gibson, Marjorie Iler Gilbert, Ed Glaab, Joyce Armstrong Gribkov, Bertie Hawes, Robert Hawes, Ethel Lang, Lillian Joggan, Beatrice Olson, Eva Plummer, Robert Potter, Burton E. Varcoe, Marjorie Foster Wilson, Jack Wise.

1928, Sallie Vandevert Dunkle, William Durfee, Joan Harris Evans, Ruth Martin, Cecil Petty, Mable Rosebrook, Past Remembrance, Lena Sampels, Doris Grubb Steel, Ruth Wood.

1929, Francis Jordan Anderson, Roland Anderson, Faye Grissom Apling, Gunnar Bjorvik, DeLoris Bjorvik, Henry Blackwell, May Blair, Olive Fordham, Maurice Iverson, Alma Reno Lermo, Lawrence McGuire, Grace V. McNellis, Maureen L. Maudlin, Barbara O'Grady Phillips, Joann Obernolte Rickman, Evelyn Anderson Russell, Helen Anderson Sholes, Ruth Simonis, Hugh Simpson, President 1983, Barbara Fryrear Spillman, Lois Stacy, Erwin Varcoe, Lena Zeek, Mardelle Zink.

1930, J. Reed Howard, Earl Lang, Louise Simpson, Edith Saunders Sutherland, Joseph Wayne Werner.

1931, Patricia Kelley Mangin, Albert W. Nelson, Evangeline Nelson, Mel O'Day, Marilyn Walter Russell.

1932, Katherine E. Bennett, John Haney, Don C. Layton, Marcia Skjersaa Rose, Ray Spencer.

1933, Homer Brown, Clara Skjersaa Gilliland, James Gilliland, A. B. King, Alice Mickel, Marjorie Rademacher, Bernice Wallenberg.

1934, William Baer, Virgie Carlton, Catherine Holmes, Kilton Kamisky, Fredora Hall Lingerfelt, Catherine Logan, Jessie Ross, Emmille Urell Starr, William Stollmack.

1935, Bertha Anderson, Evelyn Asseln, Richard Asseln, Marilyn Waterman Baer, Wanda Veatch Clark, Gladys Foster Halligan, Hap Halligan, Stuart D. Huettl, John R. Layton, Larry Lermo, Barbara Loehr, Betty Ives Moffitt, Helen O'Keefe Rastovich, Jerry W. Rice, Violet Klobas Shepard, James Van Huffel, Jerene Ranger Werner.

1936, Bertha Iverson Baker, Marjorie Brewer, Arthur Dahlgren, Gladys Dahlgren, Marie Dunlap, Chrissie Blakley Ensworth, Loretta Fread, Delena Knouft, Wait Knouft, Keith Langworthy, Mary Ringer Larsen, William Lehto, Oscar Mellin, Dwayne Rosebrook, Melvin Rosebrook, Alice May Walker, Cora R. Wallan.

1937, Otto Bauer, Ilene Brinson, Idamae Hunter, Marilyn Brown Johnston, Grace Huettl Lehto, A. B. Lingerfelt, Virginia Matson, Paul Reynolds, Irene Sigmund.

1938, Donna Freeman, John Hatch, Jodie Goodwin Nordby, Thomas O'Grady, Tony Rosengarth, Virginia Shults, Lola Taylor.

1939, Ken Cale, Wally Kremers, Edla Marcoulter, Felix Marcoulter, Sharon Matson Rosengarth, Marvin Russell, Walter Shores, Wendell Thompson.

1940, Clarence Bells, Dale Ellis, Donald Ellis, Dorothy McKay Fuhrman, Melvin Huettl, Maude Mahoney, Frances Kruse Stillwell, Kathleen O'Grady Tiller.

1941, Gladys Blackwell, Ivaloe Graffenberger, Jeannie Haney, Ken Johnston, Leslie E. Merritt, Marcella Mickel.

1942, Ben C. Graffenberger, Donna Giskaas La Venture, Diane Prichard, Frank Wosner.

1943, Mickey Foley, Michael Penhollow.

1944, Darrell Dahlgren, Miriam Clark

## Edna Ogle Skjersaa, Deschutes Pioneers' Queen—1987

By Helyn Van Huffel

Since Edna Skjersaa first traveled by train and stagecoach to visit in 1908 and later moved to Bend by Model-T Ford, she certainly qualifies as a Deschutes Pioneer.

She was honored as 1987 Queen of the Association at the 40th annual winter dinner meeting on January 17th at the Pine Forest Grange Hall.

Queen Edna was born in Portland, Oregon, on August 22, 1907 to Delvin and Thea Tweet Ogle. She attended Portland Public Schools until the fall of 1921 when the family moved to Bend. Mr. Ogle had worked in the shipyards in World War I and when the yards closed he came here to look for a job. While getting settled the family shared the home of Mrs. Ogle's parents, the Thomas Tweets, who had come to the Bend country about 1902. Mr. Ogle obtained employment at the Brooks-Scanlon Lumber Mill.

Queen Edna and her sister, Myrtle, enrolled in Bend schools. Queen Edna was a sprinter and became active in athletics by turning out daily for practice. She was disappointed that there were no organized field events for girls as there had been in Portland. Eventually a sympathetic coach allowed her to race with the boys. In her senior year she set a Central Oregon Track Record for girls in the 50 yard dash. Her time equalled the women's world record set by the famous athlete, Babe Didrikson, and in practice runs she even surpassed this record. She also played on girl's basketball teams during her high school years. Her enthusiasm helped to promote the beginning of Bend High's girls sports programs.

After high school graduation Queen Edna worked for two prominent attorneys and in the Deschutes County Tax Department.

For recreation she turned to mountain climbing and on a trip up Mt. Washington in July of 1931 she met Nels Skjersaa, a young man

who was one of the guides. It was the "love at first sight" syndrome and they dated daily and climbed various mountains. They were married in Bend on the December 31st of that year.

Nels Skjersaa had come from Norway, arriving in Bend in 1917 when he was 17 years old. He became a well-known skier and along with his friend, Emil Nordeen, and others was a member of the first search and rescue team for skiers. They also helped organize the Skyliner's Club.

Two daughters were born to Queen Edna and her husband. Marcia married Clifford (Bud) Rose and lives in Bend. Their children are Robert, Mary, and Kristina. Clara married James Gilliland and resides in Harrington, Washington. They have two sons, Brian and Eric. Nels passed away on their wedding anniversary December 31, 1977.

Since 1974 Queen Edna has worked with a committee of Bend High School graduates who plan a reunion every two years to coincide with the Pioneer picnic in July. The old time graduates look forward to these meetings and Queen Edna takes satisfaction in knowing that many of them have become members of the Deschutes Pioneers' Association.

Queen Edna was the first lady president of the local Sons of Norway Lodge which was organized in 1916. She was organist for her church for nearly twenty years and is still busy in both of these organizations.

As is customary for the Pioneer Queen, Queen Edna rode in both the 4th of July and Christmas Parades in Bend. In regal pioneer style she braved the heat in one and cold in the other.

Queen Edna remains very active and makes deliveries for the Rose Pharmacy, the business owned by Bud and Marcia. Surely she greets each customer with a pleasant word and her winsome smile.



Continued on page 8

### Deschutes Pioneer Queens & Presidents

Queens	Presidents
1947-48	Carl Johnson
1949 Mary Todd Bennett	E.A. Smith
1950 Pearl Vanderpool Becker	Edna Brinson
1951 Myrtle Sheperd Thompson	LeRoy Fox
1952 Anna Thompson	Claude Vandever
1953 Addie Triplett	William J. Burton
1954 Luella Griffin	R. D. Ketchum
1955 Flossie Smith	Chester Springer
1956 Mary Kelley	Craig Coyner, Sr.
1957 Elizabeth Bogue	Lowell Jensen
1958 Florence Spencer	Dean Hollinshead
1959 Mary Hoover	Robert Keyes
1960 Katie Ruble	Claude Kelley
1961 Belle Read	Claude Kelley
1962 Isa Corum Freeman	Steve Steidl
1963 Rose Gibson	D. Ray Miller
1964 Florence Pitman Stout	Antone Fossen
1965 Viola Logan	Cecil Moore
1966 Carrie Stevens	Ole Grubb
1967 Georgia Thom	C. L. Allen
1968 Minnie Helfrich	R. A. Long
1969 Gracie Evans Grimes	Clarence Boyd
1970 Nora Russell McMeen	George Hostetler
1971 Agnes Grubb	Stanley Scott
1972 Dorothy Vandever	Carol Boyd
1973 Eva Slack	Michael Mahoney
1974 Ruth Barnes	Mel Munkers
1975 Elsie Horn Williams	Mel Munkers
1976 Vi Mayne Franks	Rodney Rosebrook
1977 Martha Conklin	Ben Graffenberger
1978 Martha Long	Priday Holmes
1979 Elnora Dodson	Sam Johnson
1980 Sophia Gibson	Alfred Triplett
1981 Lily Hollinshead	Helmer Gustafson
1982 Anna McDonald Cloer	Robert Foley
1983 Marjorie Hoover Tromblee	Hugh Simpson
1984 Ida Niswonger Reynolds	Virgil Henkle
1985 Helen Tweet Evans	Dale McMeen
1986 Edith Swick Kostol	Jack Brinson
1987 Edna Ogle Skjersaa	Gordon McKay

#### Selected Inklings From Gist— 1908 BEND BULLETIN

Jan. 10. A large number of friends collected at the home of C.H. Gist to celebrate New Year's turkey dinner. Among the number were the families of Mr. and Mrs. James Tuller, Mr. and Mrs. C. Carson, Mr. and Mrs. Frank Arnold, and Mr. and Mrs. Walter Graham.

### MEMORIAL LIST 1987

January 1986, Vera Wagner Larson.  
 December 1986, June Hellgren Slate, Emil Nordeen.  
 February 1987, Gordon (Gordy) Erickson.  
 March, Dorothy Hinman Franks, Melvin (Chuck) Freeman.  
 April, Vera C. Rose Owens.  
 May, Payton (Slim) Shaw, Leland G. (Bert) Bertram, Bertha Gerking-Gregory, Molly S. Taylor, Ruth Barnes, Queen 1971.  
 June, Thelma N. Sattemsdahl, Emma J. Wright, Evelyn Lynes Reeve.  
 July, William B. Myers, Thorel (Stubs) Seems, Maxine Lipps.  
 August, Eveline E. Caldwell, Bertha (Mrs. George) Conklin.  
 September, Dr. Richard Robinson, Louis Alfred Dunlap, Freda Nichols Potter, Jennie Gribbskov, Marion Lawrence.  
 October, Dorothy M. Erickson, Walter Nelson.  
 November, Harold Kline, Joseph Werner, Jr.  
 December, William F. Byram, Marian E. Glaab.

### Deschutes Pioneer Officers

#### 1987 Officers

President ..... Gordon McKay  
 Vice President ..... Paul Reynolds  
 Secretary ..... Evelyn Gasbar  
 Treasurer ..... Helyn Van Huffel  
 Membership Chairman .. Marjorie Smith

Remembrance ..... Carol Boyd  
 Gazette Editors .... Keith & Donna Clark

#### Mailing Address:

Deschutes Pioneers' Association  
 c/o Marjorie Smith  
 935 N.W. Wall Street  
 Bend, OR 97701

### Deschutes County is Wheatless

Deschutes County is wheatless until August 1st. Bakeries, hotels, logging camps and hospitals excepted. Invoice of all flour held by retailers must be turned in by Tuesday, June 4.

Flour held to order of county food administrator. Private families are asked to turn in all flour on hand to storekeepers, who will receipt for it.

—The Bend Bulletin, June 1, 1918  
 Wartime Rationing



—Robert W. Sawyer Collecti  
 Deschutes County Historical Society

H. J. Eggleston, a charter member of Bend Commercial Club August 1910, supplied farmers and homesteaders with basic equipment. One of his early advertisements announced, "Bend's New Harness Shop"—with genuine Mandt wagons—saddles, blankets, robes, Michigan buggies (\$93.50 and \$85.00), and farm implements. The building appears to have been located on Wall Street's west side, between Oregon and Minnesota.

### ON THE THREE CREEKS LAKE ROAD CAMP, 1923

Before Cecil and Charlcia Moore left for Arizona and the winter of 1986-87, I asked him what he remembered of the time he worked on the forest service contract crew building a road from Sisters to Three Creeks Lake. He sent me what he remembered, notes made in his inimitable style. He does not mention Red Couch, Mahlon's father, who also worked on that crew; perhaps Cecil left that crew before Red came.

These are the names Cecil recalled from that long ago summer of 1923:

Walt Graham — "The best boss I ever worked under."

"Butch" Clark — "worked with Frank Grimes on the bulldozer."

Archie \_\_\_\_\_ — "powder man from Sisters."

Devere Hellrich — joined the crew after Cecil suggested it.

Cal Charmon — "served in many duties, very careful."

Frank Grimes — "a very good catskinner, later worked for Brooks-Scanlon."

\_\_\_\_\_ of Grandview, later a deputy sheriff for Jefferson County; "a single, solitary, short-tempered individual."

Cecil Moore — powder monkey.

Cecil also wrote: Just having been fired off a dishwashing job at the Silver Grill in Bend, I applied for a job at the forest service. Was sent fire fighting to near Fort Rock — out all night — the fire was contained. Lost most of next day getting back to Bend. Then I was sent to the Three Creeks Road Camp — was short of bedding — had a tanned deer hide and a World War I army blanket. Next day others loaned some bedding. Then Devere came with more bedding so we made it.

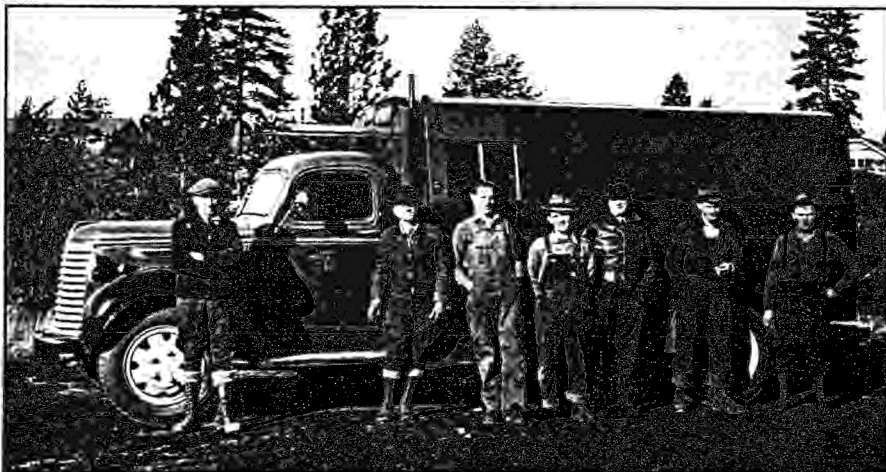
Archie, the powder man, was skinny and bewhiskered — had the shakes. Once while carrying two buckets of open TNT I left quickly while he was cutting the fuses and the ashes were dropping from his home-rolled cigaret on it! As an executive he had lots of authority over his one man crew.

Once Graham sent the two of us (Devere and Cecil) to work the sharp side of the road out to an angle — sent us out one morning, probably expected us to lay down on the job. Next morning we told him we were so far down the road we would need a ride to and from. When he checked our work he said he didn't expect that much done.

Once during a lightning storm Devere and I were forced to get us a tarp shelter over some 30" square boxes. It turned out to be TNT explosives. So if things had been different this note to you wouldn't be written!

A fisher came through the meadow where we camped. I didn't see it; some of the others did.

Walt Graham's wife was the cook. Lots of dried fruit — made some wonderful peach and apple pies thereof. The fellows built a boat at Three Creeks Lake — plank oars — tales of big land-locked steel head which had been there before. When built we started out — one fisherman (I don't recall who) cast out a multi hooked lure. A sea gull took it the second it hit the water — we had to kill the bird to get the hook out.



A local line crew, early 1940's. Pacific Power and Light line crews' primary purpose was construction of transmission lines to serve expanding customer districts before World War II postponed the work. Here, with a new heavy duty line truck, the construction crew poses at the old Pacific Power and Light Warehouse, now the Bend Recreation and Parks headquarters.

From left to right: Vivian Kelly, truck driver; "Butch" Clark, line foreman; Bert Scouten, lineman; Burt Ferguson, groundman; \_\_\_\_\_ (from line extension crew, not a regular); Chuck Perrin, lineman; John Church, groundman.

### BEND HIGH SCHOOL CLASS OF 1918

The Bend High School class of 1918 was the second largest ever graduated then. In the assembly hall of the building on Wednesday, May 29, before relatives and friends, retiring Supt. Franklin Thordarson gave diplomas to the 16 proud members. Mrs. Thordarson and Mrs. Charlie Silvis sang a duet; Principal H. M. Grant awarded honors and grand prizes.

Carol Boyd was presented with the service medal, conferred upon only one student each year. Misses Ida Niswonger, Mary Scherrer, and Lydia Scherrer (graduate, 1919) were awarded triple A medals for perfect attendance and scholarship.

The graduates: Mary Scherrer, valedictorian; Ida Niswonger, salutatorian; Eugene Fulton, class president; Rachel Knickerbocker, Carol E. M. Boyd, Gail Elsie Forbes, Minnie F. Dorsett, Elizabeth H. Evans, Arthur C. Norcott, Calvin R. Smith, Jennie F. Creighton, Mary G. Stauffer, Nellie M. Snyder, Mabel G. Sphier, Rose Marie Sphier, Birdie (Bertie) S. Ragsdale.

The class motto was "Service for others". The class flower was the red rose.

I enjoyed being the powder man's helper. One day while Archie was gone, Graham told me to load to blow out some stumps. One was hard to get. I put four corn cans of TNT three feet down under it. Graham came along after we had gone in for the day, saw the fuses — and lit them.

Next morning my four can stump was 50 yards away. The hole was a big one. Graham left me with a shovel — took half a day to fill in. "Next time", said he, "use one can TNT."

Finally, the mosquitoes were so bad that I had a ridge around my head under my hat, so I quit and went back to Madras for a farm job.

— Cecil C. Moore, to Keith Clark.

### LEE THOMAS, EARLY ARCHITECT, CHANGED BEND'S APPEARANCE

1917 Bend: mills going full blast, homesteaders coming through, hotels crowded, railroads busy, World War I on the near horizon. In the new-formed Deschutes County, population increases were pushing the census to new marks — Bend expected to reach 6,000 citizens.

A young architect, Lee Thomas, headquartered in Suites 2 and 4 of the O'Kane building, and his draftsman, Rex Fuller, were equally busy drawing plans for many new structures in downtown Bend. Among his known efforts were the Central Oregon Bank on the S.E. corner of Oregon and Wall (now part of First Interstate Bank), the First National Bank (now U. S. Bank on Oregon and Bond), an early Bend High School built near the old Central School, the Deschutes Investment Company building next door, the Pringle building (S. W. corner, Oregon and Wall).

Thomas drew the plans for the Bend Amateur Athletic Gymnasium (on the National Register of Historic Buildings) and the plans for Bend High School (present district offices). He designed St. Francis Catholic Church and Kenwood School.

By 1919 Bend's appearance was greatly changed. Lee Thomas was part of that. Although there were other architects in Bend, his work still exhibits a classical influence combined with native materials which previewed the 1920's.

### Selected Inklings from Gist— 1908 BEND BULLETIN

James McCall was the first passenger on the new Gist-Laidlaw stage on the first of the year. Now keep an eye on Gist. Watch it grow.



### THE PASSING OF THE NEIGHBORHOOD GROCERY STORE

The passing of the neighborhood grocery was part of the changes in Bend after the second World War. It removed an element of convenience and social opportunity which provided identity and sense of belonging to neighborhood residents.

Neighborhoods then were relatively stable; people knew their neighbors, and with that knowledge came understanding, even affection. Few residents had to walk many blocks "to the store"; fewer cars burned less gasoline. The proprietors, who were also clerks, provided personal assistance and service. Many delivered grocery orders; some hired local neighborhood young people. And if they didn't have an item or a particular brand, they could order it. Shopping then was often a leisurely, friendly, gossipy business that even allowed small fingers time to explore cracker or cookie barrels.

They are almost all gone now, replaced by

increasingly antiseptic, plastic impersonality.

Here is a list of the small groceries in Bend in 1937-38: Bell's Grocery (223 Hill); Viola M. Berry (1064 E. 3rd); Ora M. Brown (1800 E. 1st); Buy Rite Grocery (1609 E. 6th); Carroll Acres Store; Carroll Acres Food Market; Charlotte G. Carter (1124 Newport); Columbia Food Market (705 Columbia); Congress Grocery (210 Congress); Delaware Grocery (845 Delaware); Delaware Grocery Annex (645 Delaware); Franklin Cash Grocery (301 E. Franklin); Anna Grawl (959 Newport); Greenwood Grocery (311 E. Greenwood); Kenwood Grocery (605 Newport); Lake Grocery (69 Lake Place); Ellen McFadyen (629 W. 14th); Nicholson's Grocery (455 Scott, corner S. 3rd); Park Grocery (1 Deschutes Place); Reynolds Cash Grocery (258 Hill); Riverfront Grocery (412 Riverfront); Robert G. Smith (204 Delaware).



### Membership List

Continued from page 5

Fulton, Peggy Matson Grady, Susie Chopr Penhollow.

1945, Dorothy Smead Cale, Lloyd Ell., Marge King, Lorna McKay, Martha Moore, Randall Moore, Ann Reynolds.

1946, James Boyd, Leatha Boyd, Becky Johnson, Nyla Lundgren, Zena Moura, Jo Ward, Dr. W. D. Ward.

1947, Norman McKay.

Members without an arrival date:

Jean England, Mickey Barnum, Eunice Benson, Thelma Benson, Audra Brennan, Dorothy Byers, W. D. Collins, Myrtle Colver, Dee Davidson, Mamie Dean, Eileen Duffy, Dave Fairbanks, Jack Ferguson, Judith Frier, Jay Grenfell, Echo Gustafson, Clara Haglind, Emma Harris, Mable Hart, Carl Holt, Calvin Hoover, A. C. Ibson, Helene Jewell, John Johnson, Verl Kuhl, Meg Kulstad, Mary Larson, Donald LaVenture, Douglas Long, James McClain, Felice Mayne, Lief Nelson, Margaret Olson, Joan V. Orr, Don Owens, Helen Petty, Jess Prophet, Wilmetta Reinhart, Alvina Rink, Frances Robinson, Ruth Rosengarten, Geoff Rosengarten, Colleen Settlemyer, Clyde Sholes, Delores Slack, Hazel Spence, Eunice Thompson, Dorothy Wetle, Robert Wetle, William Wisbeck.

Associate Members who have not lived in Central Oregon 40 years:

Doris Barney, Coraliss Bower, Jack Bower, Willis Brittain, Fred Brumblay, Dorothy Cale, Irene Couch, Helen Erickson, Mildred Estebenet, Agnes Ferguson, Pam Frederiksen, Dorothy Hollenbeck, Willard Hollenbeck, John Hopper, Ann Johnson, Elizabeth McCormick, Della McKay, Gladys McLean, Guy Meritt, Bobbie Meritt, Tami Meritt, Constance Miller, John O'Leary, Lauretta O' Leary, Margaret Olson, Robert Orr, Lily Pickens, Ruth Potter, Almond Regnier, Kimberlee Roden, Clifford Rose, Peggy Wonsler Spencer, Floyd Stacy, Jean Vandeventer.

Addresses needed for:

Marjorie Brewer, Mahlon A. Couch, Sr., John Sather, Kathryn Terry.

—Esther Hewins Lawson Collection  
Deschutes Co. Historical Society

Not meals on Wheels, but Lunch in the Sagebrush. These little munchers are members of Pleasant Ridge School, District 65, 1912-13. Back row from left: Ray Clark, Amy Clark, Maybelle Jarrett, Etta Chase, Dona Whittemore; front row: Doyle Temple, Floyd Temple, Clarence Whittemore, Isaac Hunt, Justin Temple, Wayne Chase. Small! standing is Teddy Whittemore. Teacher, at center, was Ellen Forsgren, who seems hardly older than the most mature student. Note admirable collection of lard pails and plug tobacco containers put to a practical use as lunch buckets.