



Oregon Burial Site Guide  
Hood River County

---



**Idlewild**

Janice M. Healy (2001)



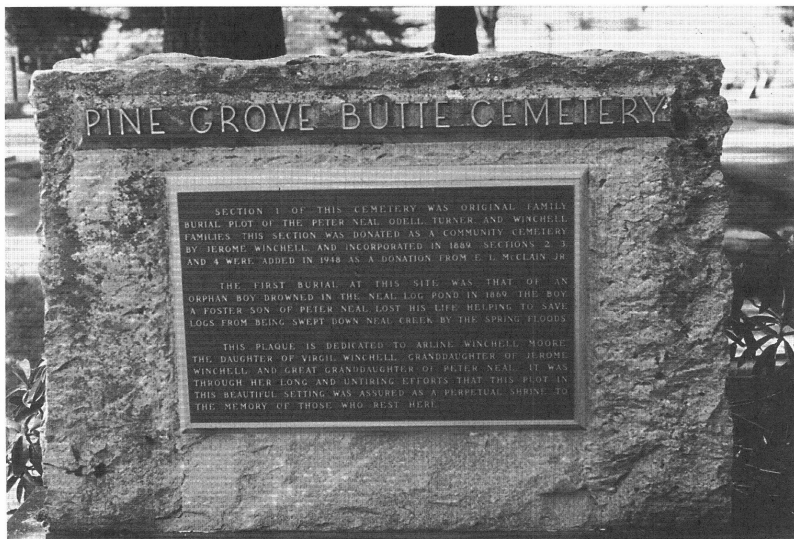
**Idlewild**

Janice M. Healy (2001)

## Oregon Burial Site Guide Hood River County

Area: 533 square miles  
Population (1998): 19,553  
County seat: Hood River, Population: 5,110  
County established: 23 June 1908

This small county was detached from Wasco County to accommodate the boom in orchards in the Hood River Valley. Reportedly Frankton Cemetery was the first organized public cemetery in the county, however the compiler does not know the date of its establishment. Pine Grove Butte Cemetery (1869) appears to be the next earliest cemetery.

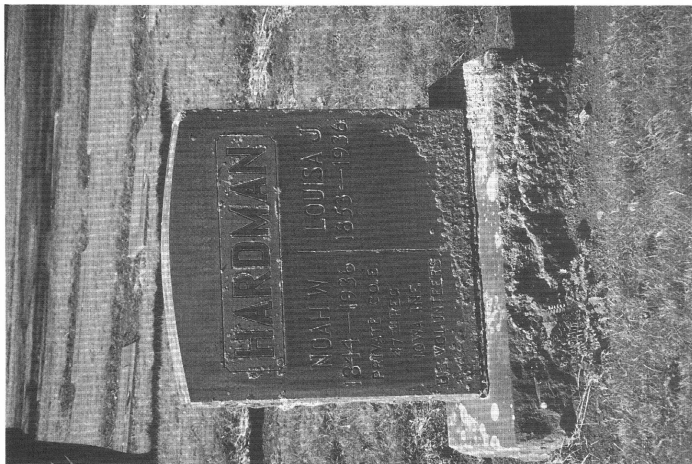


**Pine Grove Butte**

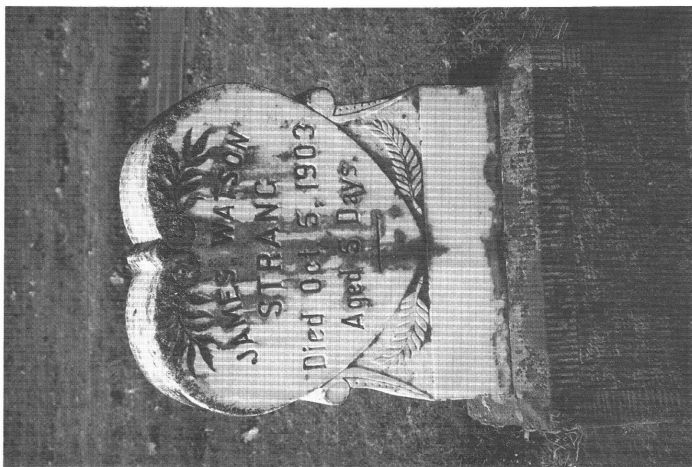
Janice M. Healy (1992)

Oregon Burial Site Guide  
Hood River County

---



Idlewild  
Janice M. Healy (2001)



Idlewild  
Janice M. Healy (2001)



## Oregon Burial Site Guide Hood River County

Name of Cemetery and also known as	Number of burials	Acres	Condition	Date started or earliest known burial	Township	Range	Section
<b>CASCADE LOCKS</b> AKA: 1. CASCADES	C	1.5	2	1875	T2N	R7E	S12
<p>Located north off of U.S. Hwy. 30 at Cascade Locks, on Lakeside Drive. The driveway, on the northeast side of the intersection across from the Texaco gas station, goes to a locked gate. There are 94 known burials (1987). {2 April 1992} (Bonnevillle Dam 1994 USGS Quad. map.)</p>							
<b>CUSHMAN'S PASTURE</b>	?	?	?	?	T3N	R10E	?
<p>Located in Section 26 or 27. Reportedly 4 graves dating from 1881 to 1890 were in a fenced enclosure, somewhere along what is now Westcliff Drive westerly out of Hood River. The fence has since been torn down. (Not shown on Hood River 1979 USGS Quad. map.)</p>							
<b>FISCHER, JOHN G.</b>	A	0.01	5	?	T1N	R10E	S31
<p>Located in the North 1/2 of Southeast 1/4 of Section 31. Go 0.75 of a mile west on Baseline Road from Parkdale and then right (north) onto the Mount Hood Highway for 0.4 of a mile to the front of the old McIsaac House. The grave had no marker but was enclosed by a white picket fence (1950's information). Mr. Fischer was thrown from his horse. NOTE: This site is on private property. (Not shown on Parkdale 1994 USGS Quad. map.)</p>							
<b>FRANKTON</b> AKA: 1. BACKUS 2. OLD PIONEER 3. SMITH BURIAL GROUND	A	0.3	2	?	T3N	R10E	S27
<p>This was the first white cemetery in the county. Located in the Frankton area, on the right bank of Phelps Creek, west of Frankton Road very near its junction with Country Club Road. There are 27 known burials (1987). The cemetery was badly vandalized in 1973. (Hood River 1979 USGS Quad. map.)</p>							
<b>HOMESTEADER GRAVE</b>	A	0.01	?	?	T1N	R10E	S21
<p>Located in the South 1/2 of Northeast 1/4 of Section 21, 100 feet north and 100 feet west from the junction of OR. Hwy. 35 and Leisure Drive, 1.5 miles north of the community of Mount Hood. Two homesteaders filed land</p>							

## Oregon Burial Site Guide Hood River County

---

Name of Cemetery and also known as | Number of burials | Acres | Condition | Date started or earliest known burial | Township | Range | Section

---

claims while "batching". One died from botulism or ptomaine, from eating poison beans, and his partner sold out to Robert Leasure. (Not shown on Parkdale 1994 USGS Quad. map.)

<p><b>IDLEWILD</b> AKA 1. A.O.U.W. RIVERSIDE #68 [HOOD RIVER] 2. IDLEWILDE 3. IDLEWOOD 4. I.O.O.F IDLEWILDE #107 [HOOD RIVER] 5. MASONIC, HOOD RIVER #105 [HOOD RIVER]</p>	<p>D 18 1 1894 T2N R10E S2 Located 2 miles south of Hood River, at 980 Tucker Road. Since 1971 this has been controlled by the Masons. There were about 6,500 burials as of 1986. Idlewood is a misspelling. It is on the James M. Benson D.L.C. #37. OC #4046. {2 April 1992} (Hood River 1979 USGS Quad. map.)</p>
<p><b>JACKSON FAMILY</b></p>	<p>A 0.25 2 1885 T2N R11E S30 This cemetery is on the west side of Fir Mountain Road, 0.5 of a mile south of the junction with Wells Drive. There were 11 or 12 graves (1987). {2 April 1992} (White Salmon 1978 USGS Quad. map.)</p>
<p><b>MASTERSON, FREDDIE</b></p>	<p>A 0.01 ? Circa 1878 T2N R7E S12 At Cascade Locks at or near the residence of J. Alfred Masterson and Martha Gay Masterson. Freddie their young son, died and was buried near where he played. No further information was given in the report. See: <i>One Woman's West</i>, Edited by Lois Barton, page 126. (Not shown on Bonneville Dam 1994 USGS Quad. map.)</p>
<p><b>McISAAC RANCH</b></p>	<p>A 0.01 5 ? T1N R10E S29 In the late 1950's someone reported 3 old graves near Parkdale, on the McIsaac Ranch. NOTE: This site is on private property. (NOT shown on Parkdale 1994 USGS Quad. map.)</p>
<p><b>MT. HOOD COMMUNITY</b> AKA: 1. FREDENBURG 2. FRIEDENBURG</p>	<p>A 1 5 1891-1895 T1N R10E S21 Located in the South 1/2 of the Southeast 1/4 of Section 21, it is 0.25 of a mile west on Leasure Drive. Walk south another 0.25 of a</p>

## Oregon Burial Site Guide Hood River County

Name of Cemetery and also known as | Number of burials | Acres | Condition | Date started or earliest known burial | Township | Range | Section

mile to an irrigation ditch and to the cemetery, which is on the northeast corner of the Avery Friedenborg Homestead (in 1986, was the northeast corner of the Lavern Hatfield Farm). There are 4 known burials. NOTE: This site is on private property. (Not shown on Parkdale 1994 USGS Quad. map.)

<p><b>MOUNTAIN VIEW MEMORIAL</b> AKA: 1. HOOD RIVER COUNTY 2. KNIGHTS OF PYTHIAS [HOOD RIVER]</p>	<p><b>D 2.2 1 1870'S T2N R10E S2</b> Located 2.5 miles southwest of Hood River at 1235 Tucker Road, adjacent to and south of St. Mary's Cemetery. There are 518 burials (1987). (Hood River 1979 USGS Quad. map.)</p>
<p><b>OAK GROVE</b></p>	<p><b>? ? ? 1906 T2N R10E ?</b> Located in Section 16 or 17 near the present Oak Grove School. Country Club Road, Portland Drive, Reed Road, and Binns Hill Drive converge here about 5 miles southwest of Hood River. See Wasco County death certificate #355 for 1906. Tilman H. Smith, a farmer, died 18 February 1906, place of burial Oak Grove Cemetery, Hood River. (The locale is shown but no cemetery on Hood River 1979 USGS Quad. map.)</p>
<p><b>PINE GROVE BUTTE</b> AKA: 1. BUTTE 2. NEAL FAMILY 3. PINE GROVE</p>	<p><b>D 7 1 1869 T2N R10E S13</b> This cemetery straddles two Ranges in east and west direction: Range 10 East and 11 East. It is also in Sections 13 and 18. Go about 6 miles south of Hood River on OR. Hwy. 35 to the Pine Grove area, then go 0.3 of a mile east of OR. Hwy. 35 on Van Horn Drive to Paasch Drive; it is at 2651 Paasch Drive. The cemetery is on the edge of the butte and below the main road on the right. {3 April 1992} (Hood River 1979 USGS Quad. map.)</p>
<p><b>ST. MARK THE EVANGELIST CHURCH COLUMBARIUM</b></p>	<p><b>B 0.01 1 1992 T3N R10E S36</b> The church is located in Hood River on Eugene Street, at the corner of 11th. A columbarium was established with 48 spaces of which a</p>

## Oregon Burial Site Guide Hood River County

---

Name of Cemetery and also known as | Number of burials | Acres | Condition | Date started or earliest known burial | Township | Range | Section

---

single space was filled as of February 1994.  
(The church itself is on the Hood River 1979  
USGS Quad. map.)

<b>ST. MARY'S</b> AKA: 1. CATHOLIC	<b>C 1.5 1 1875</b>	<b>T2N R10E</b>	<b>S2</b>
Located just north and adjacent to Mt. View Cemetery on Tucker Road. In 1906 St. Mary's Cemetery was separated from a portion of what was then the Knights of Pythias Cemetery (the present-day Mountain View Memorial). However pre-1906 burials remained with St. Mary's. There were 288 burials (1986). (Hood River 1979 USGS Quad. map.)			
<b>SHELLEY FAMILY</b>	<b>A 1 4 1910-1928</b>	<b>T2N R10E</b>	<b>S25</b>
Leave OR. Hwy. 35 on Sunday Drive, to the southeast and east for 0.4 of a mile, then turn right on Scott Road, go southwest 0.25 of a mile; the cemetery is on the right. There are 7 known burials plus several unknown infants (1987). NOTE: This site is on private property. (Parkdale 1994 USGS Quad. map.)			
<b>UPPER VALLEY</b> AKA: 1. I.O.O.F. [PARKDALE] 2. MCKAMEY 3. MT. HOOD 4. PARKDALE	<b>D 1.14 1 1896/1897</b>	<b>T1N R10E</b>	<b>S33</b>
Travel north 0.5 of a mile from Parkdale on Allen Road, then east 0.25 of a mile on Parkdale Cemetery Road. There were 367 known burials as of Feb. 1987. (Parkdale 1994 USGS Quad. map.)			
<b>VIENTO</b>	<b>? ? ? 3 Jul 1906</b>	<b>T3N R9E</b>	<b>S34</b>
Viento was a railway stop between Hood River and Wyeth. An unknown man, aged about 25, was found drowned in the Columbia River. He was buried at Viento 3 July 1906. See Wasco County death certificate #1187 for 1906. (Not shown on Mount. Defiance 1979-93 USGS Quad. map.)			
<b>WEART, GEORGE W.</b>	<b>A 0.01 5 ?</b>	<b>T1N R10E</b>	<b>S8</b>
Located in the Southwest 1/4 of the Northeast 1/4 of Section 8, at the summit of Middle Mountain, on his homestead. Take Gilhoulery Road and continue on it beyond the end of			

## Oregon Burial Site Guide Hood River County

---

Name of Cemetery and also known as	Number of burials	Acres	Condition	Date started or earliest known burial	Township	Range	Section
------------------------------------	-------------------	-------	-----------	---------------------------------------	----------	-------	---------

---

county maintenance. This route probably requires a 4-wheel drive vehicle, but continue to a road junction and keep left. The vague description of the region in 1956 is probably not valid in 2000. Good luck!  
 NOTE: This site is probably on private property. (Not shown on Parkdale 1994 USGS Quad. map.)

**WOLLAM, HARRY**

<b>A</b>	<b>0.01</b>	<b>?</b>	<b>?</b>		<b>T2N</b>	<b>R10E</b>	<b>S3</b>
----------	-------------	----------	----------	--	------------	-------------	-----------

From Hood River, drive south on Hood River Highway (Tucker Road) to Windmaster Corner (Milepost 3.8) turn right (west) onto Barrett Drive towards Rockford. Go 0.4 of a mile on Barrett Drive, and then turn right (north) onto Alameda Road. This road turns right and then left. At this last turn, at 0.5 of a mile from Barrett Drive, is a grave on the right (east) side of Alameda Road. The Wollam farm and orchard was on the opposite side of the road. You may continue north on Alameda Road to Belmont Drive and turn right (east) back to Hood River. NOTE: This site is on private property. (Not shown on Hood River 1979 USGS Quad. map.)

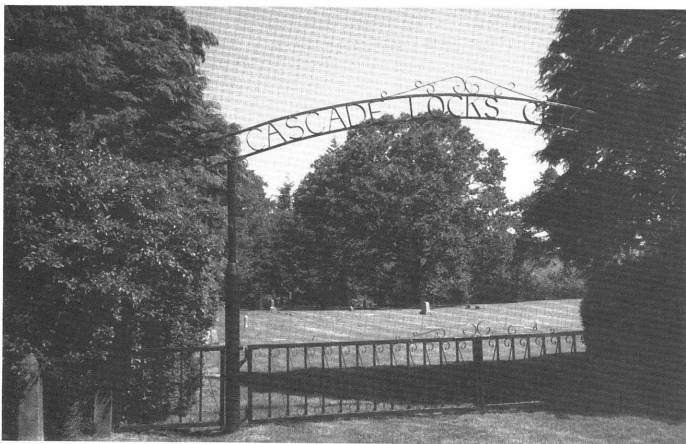
**WYETH**

<b>?</b>	<b>0.15</b>	<b>?</b>	<b>?</b>		<b>T2N</b>	<b>R8E</b>	<b>S2</b>
----------	-------------	----------	----------	--	------------	------------	-----------

This cemetery is located on the north side of Wyeth Road, 1 mile west of the Wyeth Interchange with the I-84 Freeway. Leave the freeway at Exit 51 turning right (south), and then turn right again onto Wyeth Road, which parallels the east-bound (south) side of the I-84 Freeway. There are 14 known burials, it was last used in the 1920's. (Carson 1979 USGS Quad. map.)

Oregon Burial Site Guide  
Hood River County

---



**Cascade Locks**  
Dean H. Byrd (1995)



**Jackson Family**  
Janice M. Healy (1992)

## Oregon Burial Site Guide Hood River County

A.O.U.W. RIVERSIDE #68 [HOOD RIVER]	see <b>IDLEWILD</b>			
	HOOD RIVER CO.	T2N	R10E	S2
BACKUS see <b>FRANKTON</b>	HOOD RIVER CO.	T3N	R10E	S27
BENSON D.L.C., JAMES M. see <b>IDLEWILD</b>				
	HOOD RIVER CO.	T2N	R10E	S2
BUTTE see <b>PINE GROVE BUTTE</b>	HOOD RIVER CO.	T2N	R10E	S13
<b>CASCADE LOCKS</b>	HOOD RIVER CO.	T2N	R7E	S12
CASCADES see <b>CASCADE LOCKS</b>	HOOD RIVER CO.	T2N	R7E	S12
CATHOLIC see <b>ST. MARY'S</b>	HOOD RIVER CO.	T2N	R10E	S2
<b>CUSHMAN'S PASTURE</b>	HOOD RIVER CO.	T3N	R10E	?
<b>FISCHER, JOHN G.</b>	HOOD RIVER CO.	T1N	R10E	S31
<b>FISCHER, MR.</b> see <b>FISCHER, JOHN G.</b>				
	HOOD RIVER CO.	T1N	R10E	S31
<b>FRANKTON</b>	HOOD RIVER CO.	T3N	R10E	S27
<b>FREDENBURG</b> see <b>MT. HOOD COMMUNITY</b>				
	HOOD RIVER CO.	T1N	R10E	S21
<b>FRIEDENBURG</b> see <b>MT. HOOD COMMUNITY</b>				
	HOOD RIVER CO.	T1N	R10E	S21
<b>FRIEDENBURG HOMESTEAD, AVERY</b> see <b>MT. HOOD COMMUNITY</b>				
	HOOD RIVER CO.	T1N	R10E	S21
<b>HATFIELD FARM, LAVERN</b> see <b>MT. HOOD COMMUNITY</b>				
	HOOD RIVER CO.	T1N	R10E	S21
<b>HOMESTEADER GRAVE</b>	HOOD RIVER CO.	T1N	R10E	S21
<b>HOOD RIVER COUNTY</b> see <b>MOUNTAIN VIEW MEMORIAL</b>				
	HOOD RIVER CO.	T2N	R10E	S2
<b>I.O.O.F. [PARKDALE]</b> see <b>UPPER VALLEY</b>				
	HOOD RIVER CO.	T1N	R10E	S33
<b>I.O.O.F. IDLEWILDE #107 [HOOD RIVER]</b> see <b>IDLEWILD</b>				
	HOOD RIVER CO.	T2N	R10E	S2
<b>IDELWILDE</b> see <b>IDLEWILD</b>	HOOD RIVER CO.	T2N	R10E	S2
<b>IDLEWILD</b>	HOOD RIVER CO.	T2N	R10E	S2
<b>IDLEWOOD</b> see <b>IDLEWILD</b>	HOOD RIVER CO.	T2N	R10E	S2
<b>JACKSON FAMILY</b>	HOOD RIVER CO.	T2N	R11E	S30
<b>KNIGHTS OF PYTHIAS [HOOD RIVER]</b> see <b>MOUNTAIN VIEW MEMORIAL</b>				
	HOOD RIVER CO.	T2N	R10E	S2
<b>LEASURE, ROBERT</b> see <b>HOMESTEADER GRAVE</b>				
	HOOD RIVER CO.	T1N	R10E	S21
<b>MASONIC, HOOD RIVER #105 [HOOD RIVER]</b> see <b>IDLEWILD</b>				
	HOOD RIVER CO.	T2N	R10E	S2
<b>MASTERSON, FREDDIE</b>	HOOD RIVER CO.	T2N	R7E	S12
<b>MASTERSON, J. ALFRED</b> see <b>MASTERSON, FREDDIE</b>				
	HOOD RIVER CO.	T2N	R7E	S12
<b>MASTERSON, MARTHA GAY</b> see <b>MASTERSON, FREDDIE</b>				
	HOOD RIVER CO.	T2N	R7E	S12
<b>McISAAC RANCH</b>	HOOD RIVER CO.	T1N	R10E	S29
<b>McKAMEY</b> see <b>UPPER VALLEY</b>	HOOD RIVER CO.	T1N	R10E	S33
<b>MT. HOOD</b> see <b>UPPER VALLEY</b>	HOOD RIVER CO.	T1N	R10E	S33
<b>MT. HOOD COMMUNITY</b>	HOOD RIVER CO.	T1N	R10E	S21
<b>MOUNTAIN VIEW MEMORIAL</b>	HOOD RIVER CO.	T2N	R10E	S2
<b>NEAL FAMILY</b> see <b>PINE GROVE BUTTE</b>				
	HOOD RIVER CO.	T2N	R10E	S13
<b>OAK GROVE</b>	HOOD RIVER CO.	T2N	R10E	?

**Oregon Burial Site Guide**  
**Hood River County**

OLD PIONEER see FRANKTON	HOOD RIVER CO.	T3N	R10E	S27
PARKDALE see UPPER VALLEY	HOOD RIVER CO.	T1N	R10E	S33
PINE GROVE see PINE GROVE BUTTE	HOOD RIVER CO.	T2N	R10E	S13
PINE GROVE BUTTE	HOOD RIVER CO.	T2N	R10E	S13
ST. MARK THE EVANGELIST CHURCH COLUMBARIUM				
	HOOD RIVER CO.	T3N	R10E	S36
ST. MARY'S	HOOD RIVER CO.	T2N	R10E	S2
SHELLEY FAMILY	HOOD RIVER CO.	T2N	R10E	S25
SMITH BURIAL GROUND see FRANKTON				
	HOOD RIVER CO.	T3N	R10E	S27
SMITH, TILMAN H. see OAK GROVE	HOOD RIVER CO.	T2N	R10E	?
UPPER VALLEY	HOOD RIVER CO.	T1N	R10E	S33
VIENTO	HOOD RIVER CO.	T3N	R9E	S34
WEART, GEORGE W.	HOOD RIVER CO.	T1N	R10E	S8
WOLLAM, HARRY	HOOD RIVER CO.	T2N	R10E	S3
WYETH	HOOD RIVER CO.	T2N	R8E	S2



**Idlewild**

Janice M. Healy (2001)