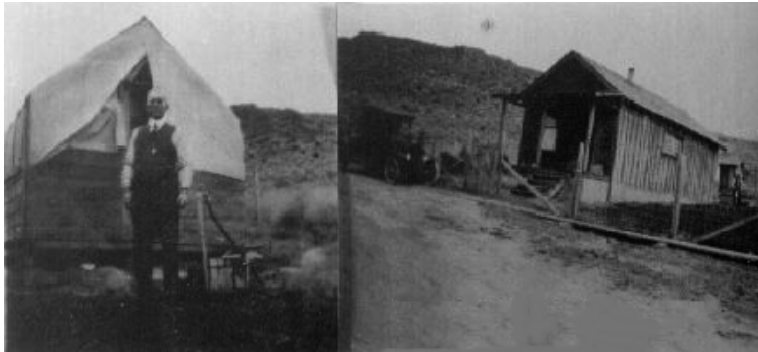


Maupin

I am very thankful to Cheri who was the prior coordinator.

History

[Link to Maupin in Wikipedia](#)



Dr. Elwood and his first office, near what is now the south county line.

The City of Maupin is located along the Deschutes (pronounced "Deh-SHOOTS") River in central Wasco County, on Highway 197. Maupin was incorporated as a city in 1922. Major local industries are log home construction and recreation. The community offers important access points to the Deschutes River for whitewater rafters, kayakers and anglers.

The population of Maupin is 411, according to the 2000 US Census. Maupin is located on the railroad tracks that connect the Columbia River Gorge with Central Oregon. Two Railroads were built through Maupin c. 1911. The Oregon Trunk track later became part of S.P.&S. and is now part of the Burlington Northern system. The other rails (on the east side of the Deschutes River) have been removed and portions of the railbed are now the Deschutes River Access Road.



Maupin train depot, exact date unknown, but they were obviously using steam engines. Likely taken in early 1900s. Polk's 1910 City Directory gives this description of Maupin: "...A new town on the Deschutes river and on the proposed route of the Oregon Trunk Line, 45 miles south of The Dalles and 27 south of Dufur, the banking and shipping point.

Maupin bears the name of one of the most celebrated of Oregon pioneers. Beside being applied to the post office, the name is also used for several geographic features in the central part of the state including two Maupin Buttes. Howard Maupin was born in Clay Co., Kentucky in 1815, and when he was about 15 years old moved to Missouri. He came to Oregon in 1863 and after spending a short time in the Willamette Valley, went to central Oregon. He first settled in Antelope Valley. The famous central Oregon Chief Paulina and his renegade Indians stole all of Maupin's stock shortly after he settled in Antelope Valley.

Maupin established a stopping place for travelers and in 1871 was the first postmaster of the town of Antelope. Maupin also lived and operated at other points in central Oregon. He had a farm at the forks of Trout Creek and it was near that location that Paulina stole more of his stock. Maupin pursued the Indians and surprised them near Paulina Basin, where he killed the old chief, who had been the terror of settlers for several years. Maupin was a veteran of the Mexican War and was said to be a crack shot. Later he had a ferry on Deschutes River near the mouth of Bakeoven Creek, which was subsequently owned by W.E. Hunt. The place was then called Hunts Ferry. W. H. Staats bought the townsite when the railroads were built up Deschutes Canyon and named the place Maupin Ferry, but the postal authorities cut off the last word and since about 1909 the place has been called Maupin.

-- Source: Oregon Geographic Names, Sixth Edition, 1992, Lewis L. McArthur, Oregon Historical Society Press, ISBN O-87595-237-2.

Wasco Next Door Neighbors:
| [Hood River](#) | [Clackamas](#) | [Marion](#) | [Jefferson](#) | [Wheeler](#) | [Sherman](#) |

Reformatted: 29 June 2021